



Immigrant Demographics Coquitlam, BC

2023

About the **NewToBC** Immigrant Demographic Profiles

NewToBC is pleased to share this 3rd edition of its **Immigrant Demographic Profiles**; the first edition was developed in 2013 and the second in 2018. Using Census 2021 data, profiles have been created for the 14 Greater Vancouver / Fraser Valley communities that received the greatest number of new immigrants over the last census period (2016 – 2021).

The profiles include useful data on countries of origin, languages spoken, age at immigration, education levels,

employment, income, religion, and more. Library staff and community service providers have found these profiles invaluable for service planning and funding proposals. Immigrants, the business community and others have found the information useful in understanding their communities and their newest residents.

To learn more about **NewToBC** and its work and for a glossary of terms, see the back page.

Funded by:

Financé par :



Immigration, Refugees
and Citizenship Canada

Immigration, Réfugiés
et Citoyenneté Canada



About the City of Coquitlam

Coquitlam is strategically situated, sharing borders with Burnaby and Port Moody to the west, New Westminster to the southwest, and Port Coquitlam to the southeast. Its northern boundary is defined by the picturesque landscapes of Burke Mountain, Eagle Ridge, and Coquitlam Mountain.

The Coquitlam Public Library has two locations.

Land Acknowledgement

NewToBC acknowledges that Coquitlam is located on the unceded traditional territory of the Kwikwetlem First Nation, which lies within the shared territories of the Tsleil-Waututh, Katzie, Musqueam, Qayqayt, Squamish and Sto'lo Nations.

The National Picture

In 2021, Canada welcomed a record number of immigrants — 406,000. Immigrants made up 23% of Canada's total population, also a new high. Nearly 70,000 chose B.C. in 2021; this marked the second-highest level of international immigration to B.C. on record.

Geography	Total Pop 2021	Immigrant Pop 2021	Immigrant Pop Total 2021	Recent Immigrant Pop 2021	Recent Immigrant Pop Total 2021
	#	#	%	#	%
Canada	36,991,981	8,361,505	23.0%	1,328,240	3.7%
Ontario	14,223,942	4,206,585	30.0%	584,680	4.2%
British Columbia	5,000,879	1,425,710	29.0%	197,425	4.0%
Quebec	8,501,833	1,210,600	14.6%	202,740	2.4%
Alberta	4,262,635	970,970	23.2%	193,175	4.6%
Manitoba	1,342,153	257,620	19.7%	58,370	4.5%
Saskatchewan	1,132,505	137,620	12.5%	43,115	3.9%
Nova Scotia	969,383	71,565	7.5%	21,385	2.2%
New Brunswick	775,610	44,120	5.8%	16,040	2.1%
Newfoundland and Labrador	510,550	14,250	2.8%	4,265	0.9%
Prince Edward Island	154,331	11,765	7.8%	4,860	3.2%
Yukon	40,232	5,385	13.6%	1,125	2.8%
Northwest Territories	41,070	4,145	10.3%	815	2.0%
Nunavut	36,858	1,165	3.2%	240	0.7%

100% sample data for total population and 25% sample data for immigration status (Census 2021)

- ▶ The number of immigrants settling in B.C. almost doubled between 2016 and 2021; 38,085 arrived in 2016 and 69,470 in 2021.
- ▶ In Census 2021 British Columbia's 1.42 million immigrants represented 17% of the national total. Only Ontario, with 4.2 million, had more.
- ▶ 29% of all British Columbians were born outside of Canada, similar to Ontario's 30% and notably higher than the national level of 23%.
- ▶ During the census period, B.C. welcomed 14.9% of Canada's recent immigrants; Ontario welcomed 44%.
- ▶ NOTE: Census 2021 encompasses a portion of the Covid period, when immigration levels were low, and does not capture the strong post-Covid increase.

Immigration to British Columbia

These were the 20 B.C. municipalities attracting the largest numbers of immigrants during the Census period – 2016 to 2021.

- ▶ In Census 2021, 76.4% of all B.C.'s immigrants and 78.4% of recent immigrants resided in Greater Vancouver.
- ▶ Recent immigrants accounted for more than 80% of total population growth in Greater Vancouver.
- ▶ In 2021, Coquitlam was 5th largest recipient of recent immigrants to B.C.

Geography	Total Pop 2021	Total Pop Growth 2016-2021	Immigrant Pop 2021	Immigrant Total Pop 2021	Recent Immigrant Pop 2021	Recent Immigrant Total 2021	Immigrant Pop Growth 2016-2021	Immigrant Pop Growth 2016-2021
	#	%	#	%	#	%	#	%
British Columbia	4,915,945	7.8%	1,425,715	29.0%	197,425	4.0%	133,040	10.3%
Greater Vancouver	2,607,010	7.5%	1,089,185	41.8%	154,815	5.9%	99,645	10.1%
Vancouver	650,380	5.2%	274,365	42.2%	41,360	6.4%	11,595	4.4%
Surrey	562,565	10.0%	250,870	44.6%	39,910	7.1%	30,715	14.0%
Burnaby	245,725	6.8%	123,795	50.4%	18,920	7.7%	8,650	7.5%
Richmond	208,400	6.0%	125,600	60.3%	13,705	6.6%	7,295	6.2%
Coquitlam	147,465	6.8%	67,540	45.8%	8,595	5.8%	6,480	10.6%
Abbotsford	150,800	8.8%	43,190	28.6%	6,130	4.1%	4,970	13.0%
New Westminster	78,055	11.7%	29,265	37.5%	5,050	6.5%	4,890	20.1%
Delta	107,270	6.4%	35,560	33.1%	4,325	4.0%	4,320	13.8%
Langley, Township	130,960	13.1%	29,890	22.8%	3,805	2.9%	7,395	32.9%
North Vancouver, City	57,505	10.2%	22,020	38.3%	3,585	6.2%	2,090	10.5%
Kelowna	141,760	14.2%	21,635	15.3%	3,545	2.5%	3,795	21.3%
Saanich	115,505	3.3%	26,040	22.5%	3,405	2.9%	1,285	5.2%
North Vancouver, District	87,385	3.0%	28,195	32.3%	3,340	3.8%	1,690	6.4%
Victoria	87,890	7.6%	17,575	20.0%	3,065	3.5%	1,635	10.3%
Nanaimo	97,020	10.7%	15,620	16.1%	2,260	2.3%	2,500	19.1%
Maple Ridge	89,860	11.0%	20,230	22.5%	2,160	2.4%	4,770	30.9%
Port Coquitlam	60,390	4.3%	20,765	34.4%	2,135	3.5%	2,335	12.7%
West Vancouver	43,385	4.1%	19,815	45.7%	2,080	4.8%	1,200	6.4%
Chilliwack	91,985	11.9%	13,600	14.8%	1,610	1.8%	2,615	23.8%
Prince George	75,160	3.6%	7,710	10.3%	1,440	1.9%	280	3.8%

20 communities in B.C. that received the most immigrants over the last census period (2016 – 2021)

Coquitlam was home to the fifth-largest immigrant population (67,540) in Greater Vancouver, representing 6.2% of the region's immigrants, a proportion that aligns with the city's share of the regional population.

Immigration to the City of Coquitlam

Recent censuses underline the role of immigration in the City's population growth.

Year	Coquitlam			Greater Vancouver		
	Total Pop #	Immigrant Pop #	Total Immigrant Pop %	Total Pop #	Immigrant Pop #	Total Immigrant Pop %
2021	147,465	67,545	45.8%	2,607,010	1,089,185	41.8%
2016	139,284	61,060	44.2%	2,463,431	989,540	40.8%
2011	126,456	52,080	41.7%	2,313,328	913,310	40.0%
2006	114,565	44,750	39.1%	2,116,581	831,265	39.6%
2001	112,890	41,295	36.6%	1,986,965	738,555	37.5%

Population and Immigration Trends: (2001 - 2021)

▶ Immigration has played a pivotal role in driving population growth in Coquitlam, accounting for 76% of net population growth over the past two decades. In comparison to Greater Vancouver, the city has a slightly higher proportion of immigrants within its population.

▶ The percentage of immigrants making up Coquitlam's total population has shown steady increases, rising from 36.6% in 2001 to 45.8% in 2021.

Immigrants by Age Group

Census data illustrates the emphasis placed on those of core working age within Canada's immigration system.

▶ Immigration is a key economic solution to Canada's aging population. In 2021, the average age of recent immigrants in Coquitlam was 35.6, compared to 49.2 for total immigrants and 35.2 for the Canadian-born.

▶ Only 7% of recent immigrants were aged 65 or over, versus 21% of immigrants and 12% of the Canadian-born.

▶ The Canadian-born population contained a notably higher proportion (25%) of young people aged 0-14, compared to immigrants (4%) and recent immigrants (14%). To a significant extent, these were the children of immigrants.

▶ Core working-age immigrants (25-54 years) accounted for 65% of recent and 49% of all immigrants in Coquitlam, compared to 36% of the Canadian-born.

Immigration is playing a significant role in addressing Canada's low birth rate and its aging population.

Period of Arrival

The pace of immigrant arrivals parallels that of Greater Vancouver.

- ▶ Census 2021 shows that recent immigrants made up 13% (8,600) of the immigrant population, slightly lower than the regional level of 14%.
- ▶ 27% of Coquitlam's immigrants had lived in Canada for less than ten years, in line with Greater Vancouver's 26%.

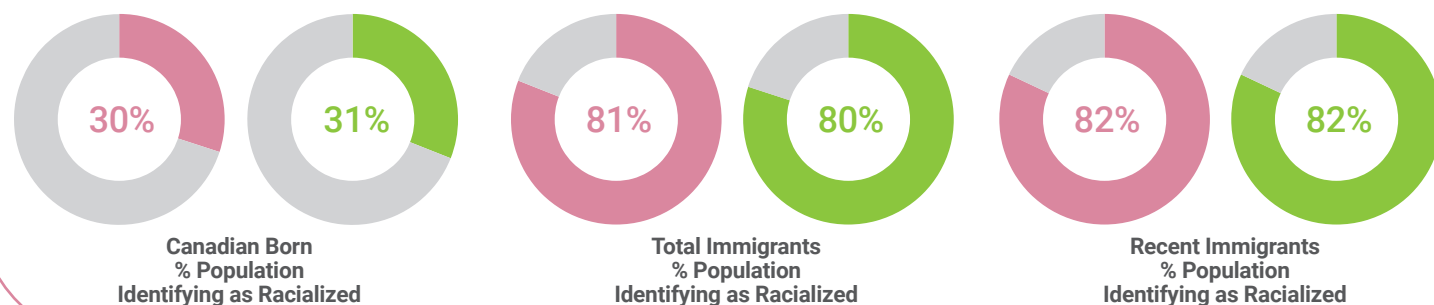
	Coquitlam		Greater Vancouver	
	#	%	#	%
Total Immigrants	67,540	100%	1,089,185	100%
2016 to 2021	8,600	13%	154,815	14%
2011 to 2015	9,240	14%	133,920	12%
2001 to 2010	18,325	27%	259,830	24%
1991 to 2000	16,940	25%	255,480	23%
1980 to 1990	6,690	10%	126,865	12%
Before 1980	7,755	11%	158,270	15%

Immigrant Arrivals by Period of Immigration (Census 2021)

Age	Coquitlam			Greater Vancouver								
	Canadian-born #	Total Immigrants %	Recent Immigrants %	Canadian-born #	Total Immigrants %	Recent Immigrants %						
Total	71,500	100%	67,545	1,350,620	100%	1,089,180	100%					
0 to 14 yrs	18,090	25%	2,400	4%	1,210	14%	315,040	23%	35,330	3%	19,650	13%
15 to 24 yrs	10,520	15%	4,965	7%	765	9%	194,025	14%	65,190	6%	14,425	9%
25 to 54 yrs	25,725	36%	33,150	49%	5,615	65%	513,995	38%	536,500	49%	107,135	69%
55 to 64 yrs	8,390	12%	12,530	19%	405	5%	153,285	11%	191,990	18%	5,920	4%
65 yrs +	8,770	12%	14,495	21%	595	7%	174,260	13%	260,165	24%	7,690	5%

Age Distribution - Coquitlam (Census 2021)

Racialized Groups in Coquitlam



▶ A significant majority (80%+) of both immigrants and recent immigrants identify themselves as members of a racialized group, also known as visible minorities. This percentage is considerably higher than the 30% reported among the Canadian-born population of Coquitlam.

▶ The representation of racialized groups in Coquitlam mirrors the pattern observed in the Greater Vancouver region.

The City of Coquitlam's racialized population is similar to that of Greater Vancouver.

Countries of Origin

China is a prominent source, followed by a diverse assortment of countries.

- ▶ China, Iran, and South Korea are the top three countries of origin, accounting in 2021 for 48% of recent and 43% of immigrants living in Coquitlam.
- ▶ The Philippines and, especially, India are underrepresented compared to their dominant role in both Greater Vancouver and British Columbia overall.
- ▶ Coquitlam is recognized as one of the primary destinations for refugees in British Columbia. It's worth noting that in 2021, more than 10% of Greater Vancouver's recent displaced Ukrainians settled here.
- ▶ Approximately 20% of recent Iranian and Korean immigrants in Greater Vancouver chose to settle in Coquitlam.

Coquitlam				B.C.				Greater Vancouver			
	#	%		#	%		#	%		#	%
Total Immigrants	67,540	100%	Recent Immigrants	8,595	100%	Recent Immigrants	197,425	100%	Recent Immigrants	154,820	100%
China	12,725	19%	China	1,915	22%	India	39,390	20%	India	30,545	20%
Korea, South	8,485	13%	Iran	1,105	13%	China	31,450	16%	China	28,970	19%
Iran	7,585	11%	Korea, South	1,100	13%	Philippines	21,220	11%	Philippines	15,090	10%
Hong Kong	4,980	7%	Philippines	475	6%	U.S.	8,760	4%	Korea, South	6,125	4%
Philippines	4,100	6%	India	380	4%	U.K.	7,670	4%	Iran	5,615	4%
Taiwan	2,685	4%	Brazil	355	4%	Korea, South	7,225	4%	U.S.	5,460	4%
U.K.	2,305	3%	Russia	245	3%	Iran	5,850	3%	Brazil	4,625	3%
India	2,030	3%	Syria	210	2%	Brazil	5,125	3%	U.K.	4,555	3%
U.S.	1,145	2%	Hong Kong	180	2%	Syria	4,955	3%	Syria	3,380	2%
Romania	940	1%	Ukraine	175	2%	Australia	3,280	2%	Mexico	2,460	2%
Other places	20,560	30%	Other places	2,455	29%	Other places	62,500	30%	Other places	47,995	29%

Top 10 Places of Birth, by Total and Recent Immigrant Populations (Census 2021)

Immigration Arrival Categories

A decreasing proportion arrived in the economic class, while more were sponsored by family.

- ▶ Census 2021 reported that 60% of recent immigrants arrived to Coquitlam in the economic class, compared to 68% of immigrants overall.
- ▶ Conversely, 29% of recent immigrants were sponsored by family, versus 21% overall.
- ▶ The proportion of refugees, at 10% recent and 11% overall, is somewhat higher than for Greater Vancouver.

Immigration Category	Coquitlam		Recent Immigrants		Greater Vancouver		Recent Immigrants	
	#	%	#	%	#	%	#	%
Total Immigrants	59,790	100%	8,595	100%	930,915	100%	154,820	100%
Economic immigrants	40,560	68%	5,195	60%	554,240	60%	97,715	63%
Principal applicants	15,110	25%	2,415	28%	225,255	24%	52,940	34%
Secondary applicants	25,455	43%	2,775	32%	328,990	35%	44,775	29%
Immigrants sponsored by family	12,265	21%	2,525	29%	282,705	30%	43,515	28%
Refugees	6,285	11%	865	10%	81,155	9%	12,880	8%
Other immigrants	675	1%	20	0%	12,805	1%	710	0%

Number of Immigrants by Immigration Category (2021). Reflects admission category and applicant type for the immigrant population in private households who landed between 1980 and 2021 - 25% sample data

*Note: 'Other immigrant' refers to a person who was granted permanent resident status under a public policy or humanitarian and compassionate cases.

China, Iran and South Korea were the top three source countries for recent immigrants to the City of Coquitlam.

Languages Spoken

A majority of immigrants speak non-official languages at home, but the proportion is dropping.

▶ In Census 2021, 64% of recent immigrants in Coquitlam spoke non-official languages most often at home, higher than Greater Vancouver's regional level of 56%. However, both percentages were notably lower than the corresponding figures in the 2016

Census, with 72% and 62%. This suggests that both city and region have been successful in attracting recent immigrants with proficient official language skills.

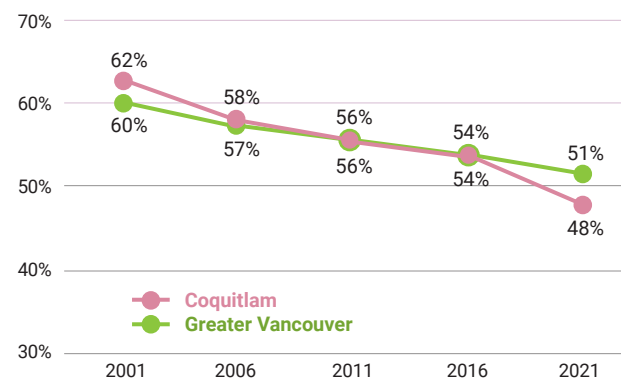
▶ In line with source country data, Mandarin remains the most spoken home language among recent immigrants, followed by Korean and Iranian Persian.

Coquitlam			Greater Vancouver		
	#	%		#	%
Total Immigrants	67,545	100%	Recent Immigrants	8,595	100%
Non-official languages	36,705	54%	Non-official languages	5,495	64%
Mandarin	9,395	14%	Mandarin	1,415	16%
Korean	6,615	10%	Korean	865	10%
Yue (Cantonese)	5,790	9%	Iranian Persian	825	10%
Iranian Persian	4,510	7%	Russian	370	4%
Russian	1,245	2%	Portuguese	315	4%
Tagalog (Pilipino, Filipino)	1,170	2%	Yue (Cantonese)	260	3%
Spanish	1,060	2%	Arabic	260	3%
Arabic	625	1%	Spanish	205	2%
Portuguese	440	1%	Tagalog (Pilipino, Filipino)	130	2%
Persian (Farsi), n.o.s.	420	1%	Hindi	90	1%
Other non-official languages	5,435	8%	Other non-official languages	760	9%
			Recent Immigrants	154,820	100%
			Non-official languages	86,615	56%
			Mandarin	21,675	14%
			Punjabi (Panjabi)	13,095	8%
			Tagalog (Pilipino, Filipino)	6,160	4%
			Korean	4,515	3%
			Yue (Cantonese)	4,180	3%
			Iranian (Persian)	4,105	3%
			Arabic	3,670	2%
			Spanish	3,505	2%
			Portuguese	3,335	2%
			Hindi	2,510	2%
			Other non-official languages	19,865	13%

Top 10 Non-official Languages Spoken at Home (Census 2021)

Percentage of population with English as a mother tongue

▶ Over time, there has been a significant decrease in the percentage of residents who speak English only as their mother tongue. The figure dropped from 62% in 2001 to 48% in 2021, a steeper decline than in Greater Vancouver.



Language Trends (2001-2021) - By % of Population with English Only as a Mother Tongue

Languages Spoken at Work

The vast majority of immigrants speak English at work, and the proportion is growing.

▶ In 2021, 12% of recent immigrants to Coquitlam spoke non-official languages often at work, compared to 9% of the city's total immigrant population and 10% among recent immigrants in Greater Vancouver.

▶ By comparison, in 2016 16% of Coquitlam's recent immigrants and 18% of Greater Vancouver's recent immigrants spoke non-official languages at work.

Coquitlam		Greater Vancouver	
Total Immigrants	Recent Immigrants	Recent Immigrants	Recent Immigrants
	%		%
Non-official languages	9%	Non-official languages	12%
Mandarin	4%	Mandarin	5%
Korean	3%	Korean	4%
Yue (Cantonese)	1%	Iranian Persian	1%
		Non-official languages	10%
		Mandarin	4%
		Punjabi (Panjabi)	2%
		Yue (Cantonese)	1%

Languages Spoken Most Often at Work By % of immigrant population aged 15 years and over (Census 2021)

Religious Affiliation

Coquitlam has a larger proportion of secular recent immigrants.

	Coquitlam	G.Van.
Religion	Total Immigrants %	Recent Immigrants %
Total	100%	100%
Buddhist	4%	2%
Christian	38%	34%
Hindu	2%	3%
Jewish	0%	0%
Muslim	10%	12%
Sikh	1%	1%
Traditional (N. American Indigenous) spirituality	0%	0%
Other religions and spiritual traditions	2%	2%
No religion and secular perspectives	44%	45%

Immigrants and religious affiliation (Census 2021)

▶ Coquitlam has a higher proportion of recent immigrants identifying as having no religion or holding secular perspectives compared to Greater Vancouver (45% in Coquitlam vs. 38% in Greater Vancouver).

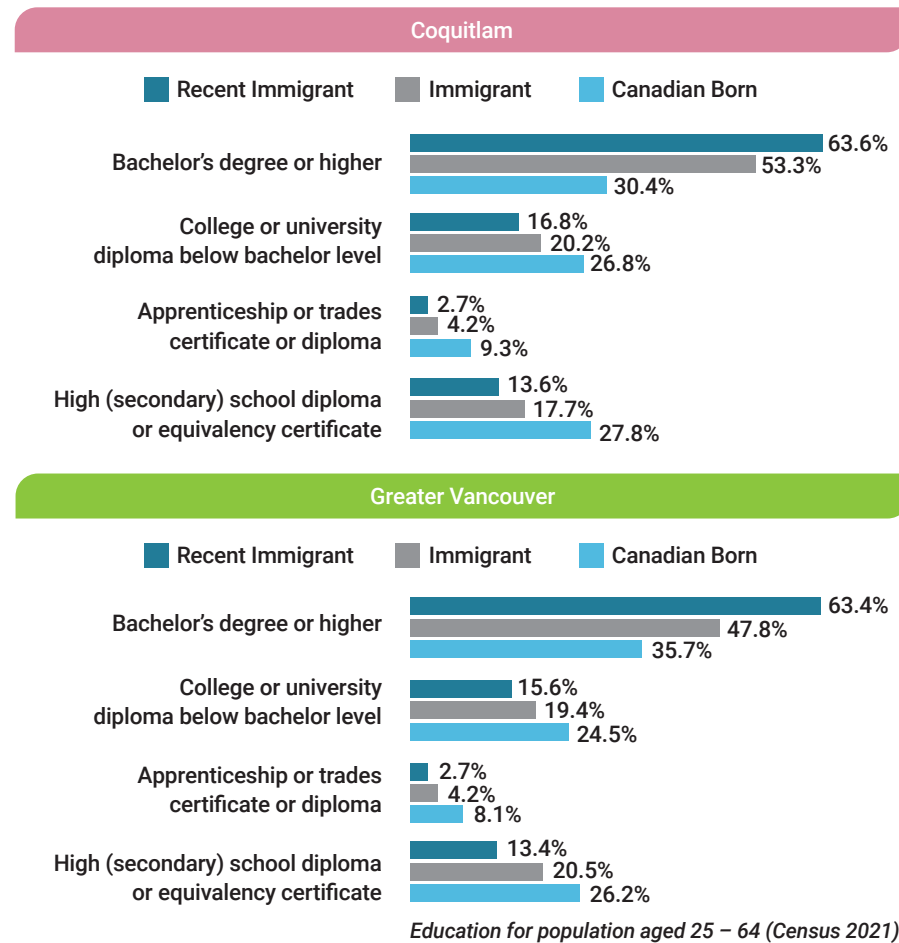
▶ A slightly higher proportion of recent immigrants also identify as Christian compared to Greater Vancouver (34% in Coquitlam vs. 30% in Greater Vancouver).

▶ A significant and growing Muslim population (12% of recent immigrants) is in line with the regional trend.

Education Levels

Immigrants are highly educated, with recent immigrants the most educated of all.

- Recent immigrants between the ages of 25 and 64 were highly educated, with 63.6% holding a bachelor's degree or higher. This is significantly higher than the proportion among Canadian-born residents (30.4%) and the total immigrant population (53.3%).
- Compared to the previous census period, education levels rose significantly. In 2016, 54.8% of Coquitlam's recent immigrants and 46.5% of immigrants had a bachelor's degree or higher.



Labour Force Participation

Immigrants account for half of Coquitlam's work force.

- Census 2021 reported that immigrants and recent immigrants represented 50% and 6% of Coquitlam's labour force, respectively, a marginal increase from the corresponding rates of 48% and 6% in 2016.
- 10.4% of Coquitlam recent immigrants were unemployed, compared to 9.9% of total immigrants and 7.6% of the Canadian-born. These figures were temporarily elevated due to the Covid 19 pandemic.
- Recent immigrants show the highest participation rates, and total immigrants the lowest.

	Coquitlam			Greater Vancouver		
	Canadian Born	Total Immigrants	Recent Immigrants	Canadian Born	Total Immigrants	Recent Immigrants
Population aged 15 years and over	53,415	65,145	7,385	1,035,580	1,053,850	135,165
In the labour force	36,385	41,040	5,045	708,255	655,110	101,265
Participation rate (%)	68.1%	63%	68.3%	68.4%	62.2%	74.9%
Employment rate (%)	62.9%	56.8%	61.2%	62.8%	56.5%	68.1%
Unemployment rate (%)	7.6%	9.9%	10.4%	8.2%	9.0%	9.1%

Employment / unemployment rates for population aged 15 years and over (Census 2021)

Occupations

Recent immigrants, immigrants, and the Canadian-born follow similar paths, with a few significant distinctions.

- In 2021, the professional, scientific and technical services industry remained the largest occupational sector for immigrant workers, accounting for 14% of immigrants and 17% of recent immigrants, notably higher than among the city's Canadian-born workers.
- Recent immigrants are also more likely to work in retail trade (14%), and accommodation and food services (9%). Nonetheless, due to Covid 19, employment in the accommodation and food service sector was cut by almost half for recent immigrants, from 16% in 2016 to 9% in 2021.

North American Industry Classification System (NAICS)			
Industry	Canadian Born Coquitlam	Total Immigrants Coquitlam	Recent Immigrants Coquitlam
54 Professional, scientific and technical services	9%	14%	17%
62 Health care and social assistance	11%	12%	8%
44-45 Retail trade	12%	11%	14%
72 Accommodation and food services	5%	7%	9%
23 Construction	10%	7%	8%
31-33 Manufacturing	5%	7%	7%
61 Educational services	9%	7%	5%
52 Finance and insurance	5%	6%	5%
81 Other services (except public administration)	4%	5%	4%
48-49 Transportation and warehousing	5%	4%	4%

Distribution of Top Ten Occupations - By % labour force population aged 15 years and over. Sorted by % immigrant labour force

Income

The income of immigrants has risen significantly, and now approaches that of the Canadian-born.

Total Income

- Census 2021 reported a notable increase in income across all groups.
- The median income of recent immigrants more than doubled from \$14,138 in 2015 to \$32,400 in 2020. Also rising significantly was the median income of immigrants and the Canadian born, up more than 40% to \$36,000 and \$48,400 respectively.
- Coquitlam's immigrants earned slightly less than their counterparts in Greater Vancouver, while Canadian-born workers earned slightly more.

Employment Income

- Census 2021 reported better employment outcomes. About 28% of the recent immigrant labour force worked full-time for an entire year with employment income in 2020, up from 16% in 2015.
- Recent immigrants who worked full-time and for an entire year earned \$60,400, up 63% from \$37,040 in 2015.

(continued on page 12)

(continued from page 11: Income)

- ▶ Full-time recent immigrant workers earned 6% less than immigrants and 18% less than the Canadian-born.

Glossary of Terms

Census refers to the population Census of Canada, which is taken at five-year intervals and counts persons and households and a wide variety of characteristics to provide a statistical portrait of the country.

Total Population refers to the total population counts in private households of a specific geographic area, regardless of immigration status on Census Day.

Canadian-born refers to a person who was born in Canada. The Canadian-born population also includes a small number of persons born outside Canada who are Canadian citizens by birth.

Immigrant refers to a person who is or has ever been a landed immigrant or permanent resident. Such a person has been granted the right to live in Canada permanently by immigration authorities. In the 2021 Census of Population, 'Immigrant' includes immigrants who were admitted to Canada on or before May 1, 2021.

Recent immigrant refers to a person who obtained landed immigrant or permanent resident status in the five years preceding a given census. In Census 2021, this refers to the period from January 1, 2016, to May 11, 2021.

Greater Vancouver is a regional district (Census Division) often known as **Metro Vancouver**. It is comprised of 21 municipalities, one electoral district and one First Nation (Tsawwassen). It borders the Strait of Georgia to the west, the U.S. border to the south, Abbotsford, and Mission to the east, and unincorporated mountainous areas to the north.

Notes:

- ▶ Total population data in each chart or table may vary slightly due to different data sources, i.e. 100% data and 25% sample data from Census profiles.
- ▶ Totals in each chart or table may vary slightly due to rounding.

Low Income

- ▶ Census 2021 shows that recent immigrants were still more likely to live on a low income. In 2020, 19% of recent immigrants aged 15 years and over were in the low-income bracket, compared with 13% of immigrants and 6% of the Canadian-born.



NewToBC partners with libraries and community service providers to develop, deliver, and promote services and resources that support immigrant settlement and integration in communities across British Columbia. NewToBC uses innovative approaches and emerging technologies to deliver three key activities.

1. **NewToBC** operates the **Library Champions Project** in communities across B.C.
2. **NewToBC** develops, updates, and disseminates a variety of library and settlement information resources for new immigrants and B.C.'s community of Service Provider Organizations that are available via the NewToBC website.
3. **NewToBC** uses social media platforms to share information about settlement resources, volunteer opportunities, and no cost workshops, training and community events of interest to new immigrants.

Go to our **Facebook**, **Twitter**, **Instagram** and **LinkedIn** feeds to find out more.

NewToBC is managed by **Public Library InterLINK** and is funded through a Contribution Agreement with **Immigration, Refugees and Citizenship Canada (IRCC)**.

Copyright © 2023: NewToBC: The Library Link for Newcomers and Public Library InterLINK

Data source: this profile was developed with Stats Canada Census data for 2021, 2016, 2011 and 2006. This product has not been endorsed by Statistics Canada.