



# Immigrant Demographics City of Delta, BC

2023

## About the **NewToBC** Immigrant Demographic Profiles

**NewToBC** is pleased to share this 3rd edition of its **Immigrant Demographic Profiles**; the first edition was developed in 2013 and the second in 2018. Using Census 2021 data, profiles have been created for the 14 Greater Vancouver / Fraser Valley communities that received the greatest number of new immigrants over the last census period (2016 – 2021).

The profiles include useful data on countries of origin, languages spoken, age at immigration, education levels,

employment, income, religion, and more. Library staff and community service providers have found these profiles invaluable for service planning and funding proposals. Immigrants, the business community and others have found the information useful in understanding their communities and their newest residents.

To learn more about **NewToBC** and its work and for a glossary of terms, see the back page.

Funded by:

Financé par :



Immigration, Refugees  
and Citizenship Canada

Immigration, Réfugiés  
et Citoyenneté Canada



## About the City of Delta

Delta District Municipality is situated in the southwestern corner of British Columbia's Lower Mainland. It is surrounded by the Fraser River to the north, the Strait of Georgia (also known as the Salish Sea) to the west, the United States border to the south, and the City of Surrey to the east.

The Fraser Valley Regional Library has three locations in Delta.



## Land Acknowledgement

NewToBC acknowledges that Delta is located on the shared, traditional, ancestral, and unceded territories of the scəwəθən (Tsawwassen), xʷməθkʷəy̓əm (Musqueam), and other Coast Salish Peoples.

## The National Picture

In 2021, Canada welcomed a record number of immigrants — 406,000. Immigrants made up 23% of Canada's total population, also a new high. Nearly 70,000 chose B.C. in 2021; this marked the second-highest level of international immigration to B.C. on record.

Geography	Total Pop 2021	Immigrant Pop 2021	Immigrant Pop Total 2021	Recent Immigrant Pop 2021	Recent Immigrant Pop Total 2021
	#	#	%	#	%
Canada	36,991,981	8,361,505	23.0%	1,328,240	3.7%
Ontario	14,223,942	4,206,585	30.0%	584,680	4.2%
British Columbia	5,000,879	1,425,710	29.0%	197,425	4.0%
Quebec	8,501,833	1,210,600	14.6%	202,740	2.4%
Alberta	4,262,635	970,970	23.2%	193,175	4.6%
Manitoba	1,342,153	257,620	19.7%	58,370	4.5%
Saskatchewan	1,132,505	137,620	12.5%	43,115	3.9%
Nova Scotia	969,383	71,565	7.5%	21,385	2.2%
New Brunswick	775,610	44,120	5.8%	16,040	2.1%
Newfoundland and Labrador	510,550	14,250	2.8%	4,265	0.9%
Prince Edward Island	154,331	11,765	7.8%	4,860	3.2%
Yukon	40,232	5,385	13.6%	1,125	2.8%
Northwest Territories	41,070	4,145	10.3%	815	2.0%
Nunavut	36,858	1,165	3.2%	240	0.7%

100% sample data for total population and 25% sample data for immigration status (Census 2021)

- ▶ The number of immigrants settling in B.C. almost doubled between 2016 and 2021; 38,085 arrived in 2016 and 69,470 in 2021.
- ▶ In Census 2021 British Columbia's 1.42 million immigrants represented 17% of the national total. Only Ontario, with 4.2 million, had more.
- ▶ 29% of all British Columbians were born outside of Canada, similar to Ontario's 30% and notably higher than the national level of 23%.
- ▶ During the census period, B.C. welcomed 14.9% of Canada's recent immigrants; Ontario welcomed 44%.
- ▶ NOTE: Census 2021 encompasses a portion of the Covid period, when immigration levels were low, and does not capture the strong post-Covid increase.

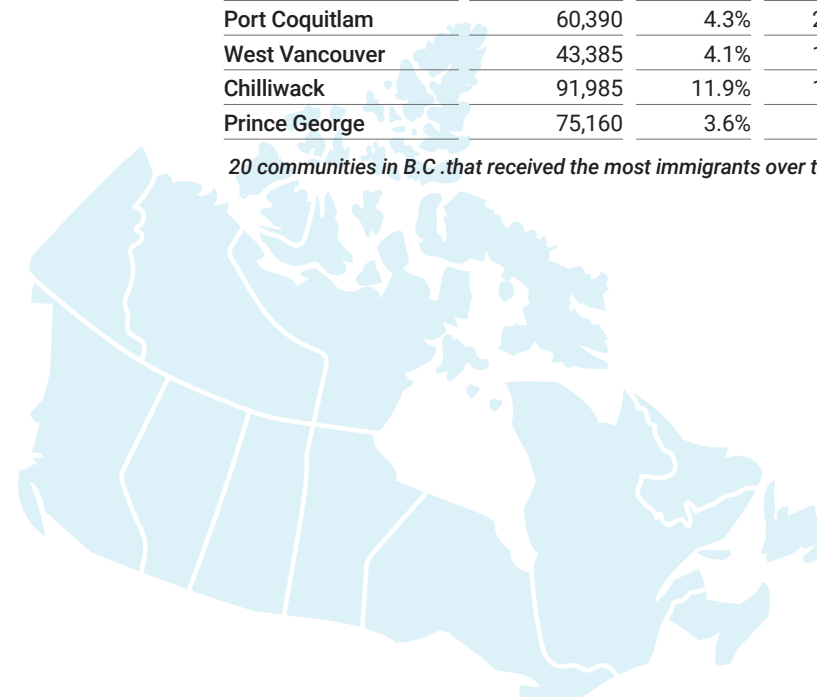
## Immigration to British Columbia

These were the 20 B.C. municipalities attracting the largest numbers of immigrants during the Census period – 2016 to 2021.

- ▶ In Census 2021, 76.4% of all B.C.'s immigrants and 78.4% of recent immigrants resided in Greater Vancouver.
- ▶ Recent immigrants accounted for more than 80% of total population growth in Greater Vancouver.
- ▶ In 2021, the City of Delta was the 8th largest recipient of recent immigrants to B.C.

Geography	Total Pop 2021	Total Pop Growth 2016-2021	Immigrant Pop 2021	Immigrant Total Pop 2021	Recent Immigrant Pop 2021	Recent Immigrant Total 2021	Immigrant Pop Growth 2016-2021	Immigrant Pop Growth 2016-2021
	#	%	#	%	#	%	#	%
British Columbia	4,915,945	7.8%	1,425,715	29.0%	197,425	4.0%	133,040	10.3%
Greater Vancouver	2,607,010	7.5%	1,089,185	41.8%	154,815	5.9%	99,645	10.1%
Vancouver	650,380	5.2%	274,365	42.2%	41,360	6.4%	11,595	4.4%
Surrey	562,565	10.0%	250,870	44.6%	39,910	7.1%	30,715	14.0%
Burnaby	245,725	6.8%	123,795	50.4%	18,920	7.7%	8,650	7.5%
Richmond	208,400	6.0%	125,600	60.3%	13,705	6.6%	7,295	6.2%
Coquitlam	147,465	6.8%	67,540	45.8%	8,595	5.8%	6,480	10.6%
Abbotsford	150,800	8.8%	43,190	28.6%	6,130	4.1%	4,970	13.0%
New Westminster	78,055	11.7%	29,265	37.5%	5,050	6.5%	4,890	20.1%
Delta	107,270	6.4%	35,560	33.1%	4,325	4.0%	4,320	13.8%
Langley, Township	130,960	13.1%	29,890	22.8%	3,805	2.9%	7,395	32.9%
North Vancouver, City	57,505	10.2%	22,020	38.3%	3,585	6.2%	2,090	10.5%
Kelowna	141,760	14.2%	21,635	15.3%	3,545	2.5%	3,795	21.3%
Saanich	115,505	3.3%	26,040	22.5%	3,405	2.9%	1,285	5.2%
North Vancouver, District	87,385	3.0%	28,195	32.3%	3,340	3.8%	1,690	6.4%
Victoria	87,890	7.6%	17,575	20.0%	3,065	3.5%	1,635	10.3%
Nanaimo	97,020	10.7%	15,620	16.1%	2,260	2.3%	2,500	19.1%
Maple Ridge	89,860	11.0%	20,230	22.5%	2,160	2.4%	4,770	30.9%
Port Coquitlam	60,390	4.3%	20,765	34.4%	2,135	3.5%	2,335	12.7%
West Vancouver	43,385	4.1%	19,815	45.7%	2,080	4.8%	1,200	6.4%
Chilliwack	91,985	11.9%	13,600	14.8%	1,610	1.8%	2,615	23.8%
Prince George	75,160	3.6%	7,710	10.3%	1,440	1.9%	280	3.8%

20 communities in B.C. that received the most immigrants over the last census period (2016 – 2021)



Delta is the seventh largest city in the Greater Vancouver Region by total population and the sixth largest by immigrant population. It is home to about 36,000 immigrants, representing 3.3% of Greater Vancouver's immigrant population and 33.1% of all Delta residents.

## Immigration to the City of Delta

Recent censuses underline the role of immigration in the City's population growth.

Year	Delta			Greater Vancouver		
	Total Pop #	Immigrant Pop #	Total Immigrant Pop %	Total Pop #	Immigrant Pop #	Total Immigrant Pop %
2021	107,270	35,555	33.1%	2,607,010	1,089,185	41.8%
2016	102,238	31,235	31.0%	2,463,431	989,540	40.8%
2011	99,863	28,520	28.9%	2,313,328	913,310	40.0%
2006	96,635	27,025	28.0%	2,116,581	831,265	39.6%
2001	96,950	25,820	26.6%	1,986,965	738,555	37.5%

Population and Immigration Trends: (2001 - 2021)

- ▶ Immigration has played a pivotal role in driving population growth in Delta, accounting for 94% of net growth over the past two decades, from 2001 to 2021.
- ▶ The immigrant population remains proportionately lower than in Greater Vancouver, but growth is faster, rising from 26.6% of all residents in 2001, to 33.1% in 2021.

## Immigrants by Age Group

Census data illustrates the emphasis placed on those of core working age within Canada's immigration system.

- ▶ Immigration is a key economic solution to Canada's aging population. In 2021, the average age of recent immigrants to Delta was 32.9, compared to 52.3 for total immigrants and 38.3 for the Canadian-born.
- ▶ Core working-age immigrants (25-54 years) accounted for 58% of recent immigrants to Delta and 46% of all immigrants, versus only 32% of the Canadian-born. All levels lagged behind regional levels.
- ▶ In comparison to Greater Vancouver, all Delta groups showed a higher proportion of seniors 65 and over.
- ▶ The proportion of young people was similar to Greater Vancouver, except among recent immigrants, with 30% of Delta's below 25, compared to 22% in Greater Vancouver.

Immigration is playing a significant role in addressing Canada's low birth rate and its aging population.

## Period of Arrival

Immigrant arrivals have remained fairly steady over recent census periods.

- ▶ Each of the past three decades accounts for about 23% of immigrants.
- ▶ Although similar to the Greater Vancouver pattern, Delta exhibits a slightly lower proportion of recent immigrants and a larger one of immigrants who arrived before 1980.

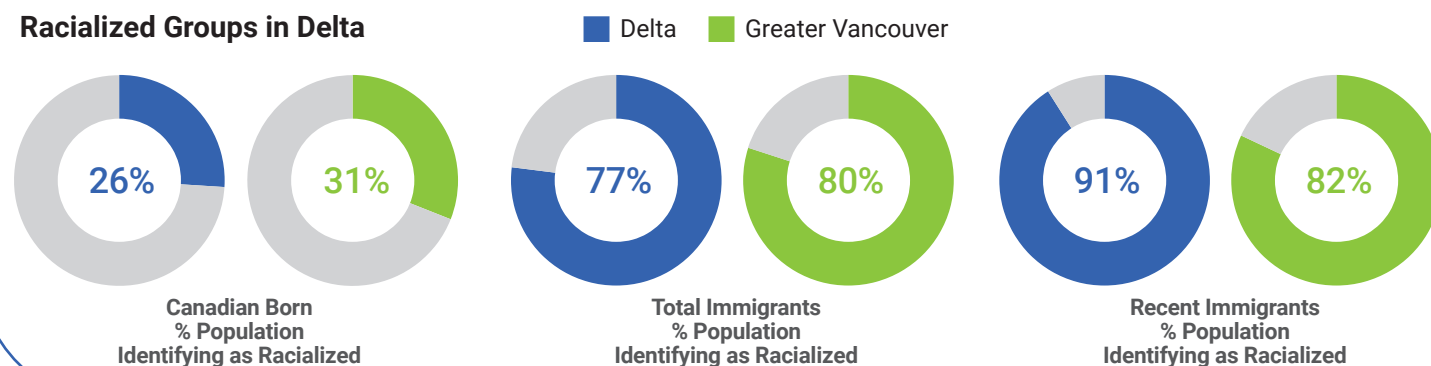
	Delta		Greater Vancouver	
	#	%	#	%
<b>Total Immigrants</b>	<b>35,555</b>	<b>100%</b>	<b>1,089,185</b>	<b>100%</b>
2016 to 2021	4,320	12%	154,815	14%
2011 to 2015	3,640	10%	133,920	12%
2001 to 2010	8,345	23%	259,830	24%
1991 to 2000	8,035	23%	255,480	23%
1980 to 1990	3,930	11%	126,865	12%
Before 1980	7,285	20%	158,270	15%

Immigrant Arrivals by Period of Immigration (Census 2021)

Age	Delta						Greater Vancouver					
	Canadian-born		Total Immigrants		Recent Immigrants		Canadian-born		Total Immigrants		Recent Immigrants	
	#	%	#	%	#	%	#	%	#	%	#	%
<b>Total</b>	<b>66,745</b>	<b>100%</b>	<b>35,555</b>	<b>100%</b>	<b>4,325</b>	<b>100%</b>	<b>1,350,620</b>	<b>100%</b>	<b>1,089,180</b>	<b>100%</b>	<b>154,815</b>	<b>100%</b>
0 to 14 yrs	14,655	22%	1,215	3%	750	17%	315,040	23%	35,330	3%	19,650	13%
15 to 24 yrs	10,450	16%	1,790	5%	580	13%	194,025	14%	65,190	6%	14,425	9%
25 to 54 yrs	21,525	32%	16,180	46%	2,500	58%	513,995	38%	536,500	49%	107,135	69%
55 to 64 ys	8,955	13%	6,440	18%	205	5%	153,285	11%	191,990	18%	5,920	4%
65 yrs +	11,170	17%	9,945	28%	290	7%	174,260	13%	260,165	24%	7,690	5%

Age Distribution - Delta (Census 2021)

### Racialized Groups in Delta



- ▶ A significant majority of both immigrants (77%) and recent immigrants (91%) identify as members of a racialized group, also known as visible minorities.

- ▶ The representation of racialized groups mirrors the pattern observed in the Greater Vancouver region. However, the racialized population among recent immigrants is about 10% higher than the regional level.

The percentage of the total immigrant population identifying as racialized is slightly lower in Delta (77%) than Greater Vancouver (80%).

## Countries of Origin

India is a prominent source, especially for new immigrants.

- ▶ India, China, and the Philippines are the top three countries of origin for immigrants to each of Delta, Greater Vancouver, and British Columbia, but new immigrants to Delta are much more likely to come from India (47%), compared to 20% both regionally and provincially.
- ▶ Delta has also been welcoming refugees and displaced individuals, especially in recent years. Several source countries of refugees to B.C., including Syria, Pakistan, Somalia, and Afghanistan, are represented in its top 10, together accounting for 10% of the recent immigrant population.
- ▶ Reflective of the city's strong immigrant arrivals before 1980, at 8% immigrants from the UK are almost triple the regional level.

Delta				B.C.				Greater Vancouver			
	#	%		#	%		#	%		#	%
<b>Total Immigrants</b>	<b>35,555</b>	<b>100%</b>	<b>Recent Immigrants</b>	<b>4,325</b>	<b>100%</b>	<b>Recent Immigrants</b>	<b>197,425</b>	<b>100%</b>	<b>Recent Immigrants</b>	<b>154,820</b>	<b>100%</b>
India	12,375	35%	India	2,025	47%	India	39,390	20%	India	30,545	20%
China	3,820	11%	China	545	13%	China	31,450	16%	China	28,970	19%
U.K.	2,955	8%	Philippines	345	8%	Philippines	21,220	11%	Philippines	15,090	10%
Philippines	2,680	8%	Syria	235	5%	U.S.	8,760	4%	Korea, South	6,125	4%
Hong Kong	1,100	3%	U.S.	135	3%	U.K.	7,670	4%	Iran	5,615	4%
Taiwan	1,095	3%	Pakistan	90	2%	Korea, South	7,225	4%	U.S.	5,460	4%
U.S.	950	3%	U.K.	80	2%	Iran	5,850	3%	Brazil	4,625	3%
Pakistan	775	2%	Somalia	70	2%	Brazil	5,125	3%	U.K.	4,555	3%
Germany	665	2%	Turkey	65	2%	Syria	4,955	3%	Syria	3,380	2%
South Africa	360	1%	Afghanistan	45	1%	Australia	3,280	2%	Mexico	2,460	2%
Other places	8,780	25%	Other places	690	16%	Other places	62,500	30%	Other places	47,995	29%

Top 10 Places of Birth, by Total and Recent Immigrant Populations (Census 2021)

## Immigration Arrival Categories

Delta welcomed a larger proportion of economic immigrants and refugees, and fewer sponsored by family members during the recent census period.

- ▶ Census 2021 reported that approximately 57% of recent immigrants in Delta arrived in the economic class, a higher proportion than for all immigrants, but lower than the level for Greater Vancouver.
- ▶ Overall, the city is home to a larger proportion of immigrants sponsored by family members—44%, compared to 30% in Greater Vancouver. However, only 29% of recent immigrants arrived in this manner, in line with regional levels.
- ▶ Fully 14% of recent immigrants to Delta arrived as refugees, almost double the regional level.

Immigration Category	Delta		Greater Vancouver	
	Total Immigrants	Recent Immigrants	Total Immigrants	Recent Immigrants
	#	%	#	%
<b>Total Immigrants</b>	<b>28,270</b>	<b>100%</b>	<b>4,325</b>	<b>100%</b>
<b>Economic immigrants</b>	<b>13,575</b>	<b>48%</b>	<b>2,445</b>	<b>57%</b>
Principal applicants	5,705	20%	1,245	29%
Secondary applicants	7,875	28%	1,200	28%
<b>Immigrants sponsored by family</b>	<b>12,375</b>	<b>44%</b>	<b>1,275</b>	<b>29%</b>
<b>Refugees</b>	<b>2,095</b>	<b>7%</b>	<b>590</b>	<b>14%</b>
<b>Other immigrants</b>	<b>225</b>	<b>1%</b>	<b>15</b>	<b>0%</b>

Number of Immigrants by Immigration Category (2021). Reflects admission category and applicant type for the immigrant population in private households who landed between 1980 and 2021 - 25% sample data

\*Note: 'Other immigrant' refers to a person who was granted permanent resident status under a public policy or humanitarian and compassionate cases.

India, China and the Philippines were the top three source countries for recent immigrants to the City of Delta.

## Languages Spoken

Close to 60% of recent immigrants in Delta speak non-official languages at home, a drop from the previous census period.

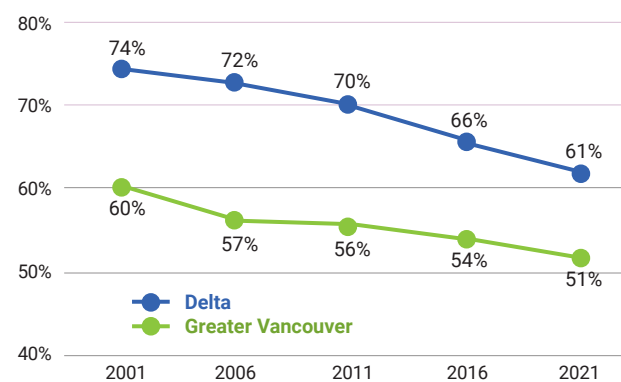
- ▶ In the 2021 Census, 59% of recent immigrants in Delta spoke non-official languages most often at home, slightly more than the regional level of 56%. In both cases this represented a small drop from the previous census.
- ▶ Punjabi remains the most frequently spoken home language among Delta's total immigrant (23%) and recent immigrant (27%) populations.
- ▶ Arabic (4%) and Somali (2%) also rank among the top 10 home languages for recent immigrants. Furthermore, most (60%) of Greater Vancouver's Somali-speaking recent immigrants live in Delta, even though Delta's share of regional recent immigrants is only 3%.

Delta			Greater Vancouver		
	#	%		#	%
<b>Total Immigrants</b>	<b>35,560</b>	<b>100%</b>	<b>Recent Immigrants</b>	<b>4,325</b>	<b>100%</b>
Non-official languages	17,020	48%	Non-official languages	2,535	59%
Punjabi (Panjabi)	8,045	23%	Punjabi (Panjabi)	1,180	27%
Mandarin	2,900	8%	Mandarin	450	10%
Yue (Cantonese)	1,505	4%	Arabic	160	4%
Hindi	795	2%	Hindi	115	3%
Tagalog (Pilipino, Filipino)	740	2%	Tagalog (Pilipino, Filipino)	110	3%
Spanish	345	1%	Somali	105	2%
Urdu	340	1%	Turkish	60	1%
Arabic	215	1%	Spanish	60	1%
Min Nan	165	0%	Yue (Cantonese)	55	1%
Russian	140	0%	Urdu	35	1%
Other non-official languages	1,830	5%	Other non-official languages	205	5%
			<b>Recent Immigrants</b>	<b>154,820</b>	<b>100%</b>
			Non-official languages	86,615	56%
			Mandarin	21,675	14%
			Punjabi (Panjabi)	13,095	8%
			Tagalog (Pilipino, Filipino)	6,160	4%
			Korean	4,515	3%
			Yue (Cantonese)	4,180	3%
			Iranian (Persian)	4,105	3%
			Arabic	3,670	2%
			Spanish	3,505	2%
			Portuguese	3,335	2%
			Hindi	2,510	2%
			Other non-official languages	19,865	13%

Top 10 Non-official Languages Spoken at Home (Census 2021)

### Percentage of population with English as a mother tongue

- ▶ Over time, there has been a significant decrease in the percentage of Delta residents who speak English only as their mother tongue. This figure dropped from 74% in 2001 to 61% in 2021, steeper than the decrease in Greater Vancouver.



Language Trends (2001-2021) - By % of Population with English Only as a Mother Tongue

## Languages Spoken at Work

Most immigrants speak English at work, and the proportion is growing rapidly.

- ▶ In 2021, 10% of Delta's recent immigrants spoke non-official languages often at work, in line with the regional level.
- ▶ By comparison, in 2016 23% of Delta's recent immigrants and 18% of Greater Vancouver's recent immigrants spoke non-official languages at work.

Delta		Greater Vancouver	
Total Immigrants	Recent Immigrants	Recent Immigrants	
	%		%
Non-official languages	8%	Non-official languages	10%
Punjabi (Panjabi)	5%	Punjabi (Panjabi)	7%
Mandarin	2%	Mandarin	2%
Yue (Cantonese)	1%	Yue (Cantonese)	1%

Languages Spoken Most Often at Work By % of immigrant population aged 15 years and over (Census 2021)

## Religious Affiliation

Delta has a smaller proportion of secular immigrants.

	Delta	G. Van.
Religion	Total Immigrants %	Recent Immigrants %
<b>Total</b>	<b>100%</b>	<b>100%</b>
Buddhist	3%	1%
Christian	30%	19%
Hindu	7%	13%
Jewish	0%	1%
Muslim	6%	15%
Sikh	29%	32%
Traditional (N. American Indigenous) spirituality	0%	0%
Other religions and spiritual traditions	1%	1%
No religion and secular perspectives	24%	18%

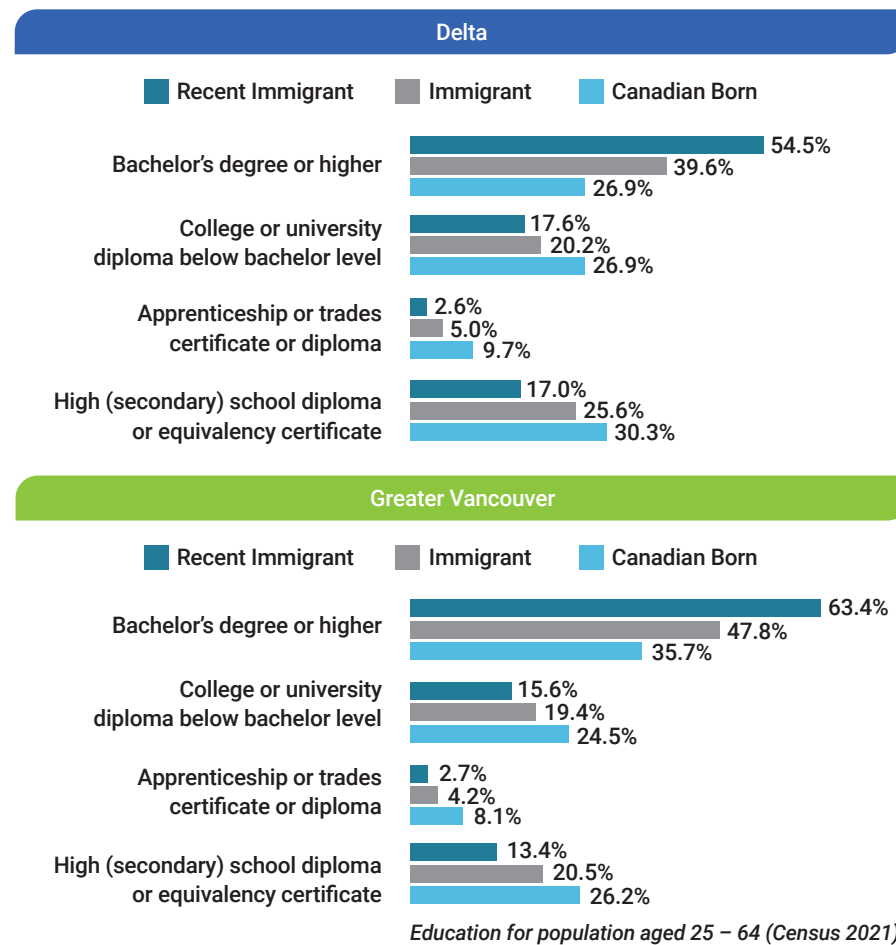
Immigrants and religious affiliation (Census 2021)

- ▶ Delta has a significantly lower percentage of recent immigrants identifying as having no religion or holding secular perspectives compared to Greater Vancouver—18% versus 38%.
- ▶ As well, the 19% identifying as Christians is lower than the 30% regional level.
- ▶ The differences are largely accounted for by the much higher proportion of Sikhs—32% compared to 11%.
- ▶ As well, Muslims and Hindu populations are growing rapidly.

## Education Levels

Immigrants are highly educated, with recent immigrants the most educated of all.

- ▶ Recent immigrants in Delta between the ages of 25 and 64 were highly educated, with 54.5% holding a bachelor's degree or higher. This is significantly higher than the proportion among Canadian-born residents (26.9%) and the total immigrant population (39.6%).
- ▶ Compared to the previous census period, education levels rose sharply. In 2016, 46.8% of Delta's recent immigrants and 35.0% of immigrants had a bachelor's degree or higher.
- ▶ All percentages were somewhat lower than regional levels.



## Labour Force Participation

Recent immigrants are an important component of the labour force.

- ▶ Census 2021 reported that immigrants and recent immigrants represented 36% and 4% of Delta's labour force respectively, increases from 34% and 3% in 2016.
- ▶ Recent immigrants in both Delta and Greater Vancouver showed significantly higher participation rates than the other two groups.
- ▶ In 2021, 9.8% of recent immigrants were unemployed, compared to 7.1% of immigrants and 7.7% of the Canadian-born. In all cases, unemployment rates were temporarily elevated due to the Covid 19 pandemic.

	Delta			Greater Vancouver		
	Canadian Born	Total Immigrants	Recent Immigrants	Canadian Born	Total Immigrants	Recent Immigrants
Population aged 15 years and over	52,100	34,345	3,570	1,035,580	1,053,850	135,165
In the labour force	33,590	21,070	2,545	708,255	655,110	101,265
Participation rate (%)	64.5%	61.3%	71.3%	68.4%	62.2%	74.9%
Employment rate (%)	59.8%	56.6%	64.3%	62.8%	56.5%	68.1%
Unemployment rate (%)	7.2%	7.7%	9.8%	8.2%	9.0%	9.1%

*Employment / unemployment rates for population aged 15 years and over (Census 2021)*

## Occupations

Recent immigrants, immigrants, and the Canadian-born follow similar paths, with only minor distinctions.

- ▶ Delta has a large immigrant labour force working in transportation and warehousing industries—13% of immigrants and 12% of recent immigrants, compared to 8% of the Canadian-born.
- ▶ The educational services sector was dominated by the Canadian-born.
- ▶ Otherwise, distinctions among the groups were minor.
- ▶ It should be noted that employment in accommodation and food services, traditionally a domain important to recent immigrants, was temporarily affected by Covid.

North American Industry Classification System (NAICS)			
Industry	Canadian Born Delta	Total Immigrants Delta	Recent Immigrants Delta
48-49 Transportation and warehousing	8%	13%	12%
62 Health care and social assistance	10%	12%	9%
44-45 Retail trade	12%	10%	14%
31-33 Manufacturing	6%	9%	7%
54 Professional, scientific and technical services	8%	9%	10%
23 Construction	10%	9%	11%
61 Educational services	9%	6%	4%
72 Accommodation and food services	5%	5%	7%
56 Administrative and support, waste management and remediation services	4%	5%	6%
52 Finance and insurance	4%	5%	4%

*Distribution of Top Ten Occupations - By % labour force population aged 15 years and over. Sorted by % immigrant labour force*

## Income

The income of immigrants has risen significantly, and now approaches that of the Canadian-born.

### Total Income

- ▶ Census 2021 reported a notable increase in income across all groups, but the median income of recent immigrants more than doubled from \$15,003 in 2015 to \$34,000 in 2020. Also rising significantly was the median income of immigrants and the Canadian born, up almost 30% to \$39,600 and \$47,200 respectively.
- ▶ Immigrants earned slightly more than their counterparts in Greater Vancouver, while recent immigrants earned about 10% less than the regional level.

### Employment Income

- ▶ Census 2021 also reported markedly better employment outcomes for recent immigrants. About 27% of the recent immigrant labour force worked full-time for an entire year with employment income in 2020, up from 17% in 2015.
- ▶ Recent immigrants who worked full-time and for an entire year earned \$48,000, up 26% from \$38,220.

*(continued on page 12)*

(continued from page 11: Income)

- ▶ Full-time recent immigrant workers earned 22% less than immigrants and 35% less than the Canadian-born. These gaps were more significant than regional comparisons.

## Glossary of Terms

**Census** refers to the population Census of Canada, which is taken at five-year intervals and counts persons and households and a wide variety of characteristics to provide a statistical portrait of the country.

**Total Population** refers to the total population counts in private households of a specific geographic area, regardless of immigration status on Census Day.

**Canadian-born** refers to a person who was born in Canada. The Canadian-born population also includes a small number of persons born outside Canada who are Canadian citizens by birth.

**Immigrant** refers to a person who is or has ever been a landed immigrant or permanent resident. Such a person has been granted the right to live in Canada permanently by immigration authorities. In the 2021 Census of Population, 'Immigrant' includes immigrants who were admitted to Canada on or before May 1, 2021.

**Recent immigrant** refers to a person who obtained landed immigrant or permanent resident status in the five years preceding a given census. In Census 2021, this refers to the period from January 1, 2016, to May 11, 2021.

**Greater Vancouver** is a regional district (Census Division) often known as **Metro Vancouver**. It is comprised of 21 municipalities, one electoral district and one First Nation (Tsawwassen). It borders the Strait of Georgia to the west, the U.S. border to the south, Abbotsford, and Mission to the east, and unincorporated mountainous areas to the north.

### Notes:

- ▶ Total population data in each chart or table may vary slightly due to different data sources, i.e. 100% data and 25% sample data from Census profiles.
- ▶ Totals in each chart or table may vary slightly due to rounding.

## Low Income

- ▶ According to the Census 2021, recent immigrants continue to have a higher likelihood of living on a low income. In 2020, 11.6% of recent immigrants 15 and over fell into the low-income bracket, versus 7.7% of all immigrants and 5.6% of the Canadian-born.
- ▶ Compared to Greater Vancouver, Delta has a notably lower proportion of residents in the low-income bracket, regardless of their immigration status.



**NewToBC partners with libraries and community service providers to develop, deliver, and promote services and resources that support immigrant settlement and integration in communities across British Columbia. NewToBC uses innovative approaches and emerging technologies to deliver three key activities.**

1. **NewToBC** operates the **Library Champions Project** in communities across B.C.
2. **NewToBC** develops, updates, and disseminates a variety of library and settlement information resources for new immigrants and B.C.'s community of Service Provider Organizations that are available via the NewToBC website.
3. **NewToBC** uses social media platforms to share information about settlement resources, volunteer opportunities, and no cost workshops, training and community events of interest to new immigrants.

Go to our **Facebook**, **Twitter**, **Instagram** and **LinkedIn** feeds to find out more.

**NewToBC** is managed by **Public Library InterLINK** and is funded through a Contribution Agreement with **Immigration, Refugees and Citizenship Canada (IRCC)**.

**Copyright © 2023: NewToBC:** The Library Link for Newcomers and Public Library InterLINK

*Data source: this profile was developed with Stats Canada Census data for 2021, 2016, 2011 and 2006. This product has not been endorsed by Statistics Canada.*