



# Immigrant Demographics Township of Langley, BC

2023

## About the **NewToBC** Immigrant Demographic Profiles

**NewToBC** is pleased to share this 3rd edition of its **Immigrant Demographic Profiles**; the first edition was developed in 2013 and the second in 2018. Using Census 2021 data, profiles have been created for the 14 Greater Vancouver / Fraser Valley communities that received the greatest number of new immigrants over the last census period (2016 – 2021).

The profiles include useful data on countries of origin, languages spoken, age at immigration, education levels,

employment, income, religion, and more. Library staff and community service providers have found these profiles invaluable for service planning and funding proposals. Immigrants, the business community and others have found the information useful in understanding their communities and their newest residents.

To learn more about **NewToBC** and its work and for a glossary of terms, see the back page.

Funded by:

Financé par :



Immigration, Refugees  
and Citizenship Canada

Immigration, Réfugiés  
et Citoyenneté Canada



## About the Township of Langley

The Township of Langley is located within Greater Vancouver in British Columbia's southwest corner. It encompasses rural areas sprinkled with suburban developments as well as somewhat more densely populated portions such as Fort Langley, Aldergrove and areas adjacent the City of Surrey and City of Langley.

## Land Acknowledgement

NewToBC acknowledges that the Township of Langley is situated on the traditional lands of the Coast Salish peoples, and in particular, the ǵíćáǵ (Katzie), ǵʷá:ńłǵń (Kwantlen), Máthkwi (Matsqui) and se'mya'me (Semiahmoo) First Nations.



## The National Picture

In 2021, Canada welcomed a record number of immigrants — 406,000. Immigrants made up 23% of Canada's total population, also a new high. Nearly 70,000 chose B.C. in 2021; this marked the second-highest level of international immigration to B.C. on record.

Geography	Total Pop 2021	Immigrant Pop 2021	Immigrant Pop Total 2021	Recent Immigrant Pop 2021	Recent Immigrant Pop Total 2021
	#	#	%	#	%
Canada	36,991,981	8,361,505	23.0%	1,328,240	3.7%
Ontario	14,223,942	4,206,585	30.0%	584,680	4.2%
British Columbia	5,000,879	1,425,710	29.0%	197,425	4.0%
Quebec	8,501,833	1,210,600	14.6%	202,740	2.4%
Alberta	4,262,635	970,970	23.2%	193,175	4.6%
Manitoba	1,342,153	257,620	19.7%	58,370	4.5%
Saskatchewan	1,132,505	137,620	12.5%	43,115	3.9%
Nova Scotia	969,383	71,565	7.5%	21,385	2.2%
New Brunswick	775,610	44,120	5.8%	16,040	2.1%
Newfoundland and Labrador	510,550	14,250	2.8%	4,265	0.9%
Prince Edward Island	154,331	11,765	7.8%	4,860	3.2%
Yukon	40,232	5,385	13.6%	1,125	2.8%
Northwest Territories	41,070	4,145	10.3%	815	2.0%
Nunavut	36,858	1,165	3.2%	240	0.7%

100% sample data for total population and 25% sample data for immigration status (Census 2021)

- ▶ The number of immigrants settling in B.C. almost doubled between 2016 and 2021; 38,085 arrived in 2016 and 69,470 in 2021.
- ▶ In Census 2021 British Columbia's 1.42 million immigrants represented 17% of the national total. Only Ontario, with 4.2 million, had more.
- ▶ 29% of all British Columbians were born outside of Canada, similar to Ontario's 30% and notably higher than the national level of 23%.
- ▶ During the census period, B.C. welcomed 14.9% of Canada's recent immigrants; Ontario welcomed 44%.
- ▶ NOTE: Census 2021 encompasses a portion of the Covid period, when immigration levels were low, and does not capture the strong post-Covid increase.

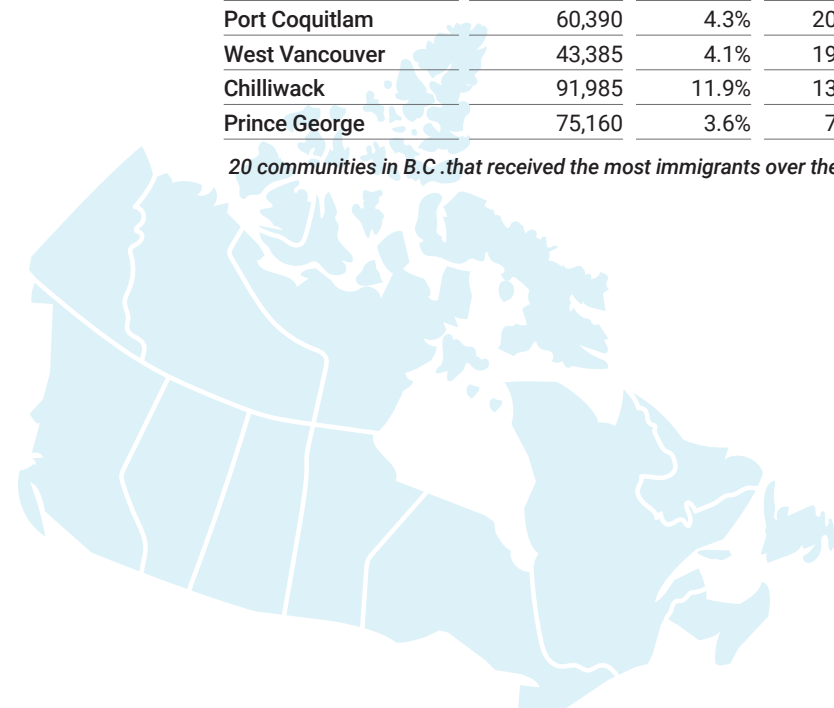
## Immigration to British Columbia

These were the 20 B.C. municipalities attracting the largest numbers of immigrants during the Census period – 2016 to 2021.

- ▶ In Census 2021, 76.4% of all B.C.'s immigrants and 78.4% of recent immigrants resided in Greater Vancouver.
- ▶ Recent immigrants accounted for more than 80% of total population growth in Greater Vancouver.
- ▶ In 2021, the Township was the 9th largest recipient of immigrants to B.C.

Geography	Total Pop 2021	Total Pop Growth 2016-2021	Immigrant Pop 2021	Immigrant Total Pop 2021	Recent Immigrant Pop 2021	Recent Immigrant Total 2021	Immigrant Pop Growth 2016-2021	Immigrant Pop Growth 2016-2021
	#	%	#	%	#	%	#	%
British Columbia	4,915,945	7.8%	1,425,715	29.0%	197,425	4.0%	133,040	10.3%
Greater Vancouver	2,607,010	7.5%	1,089,185	41.8%	154,815	5.9%	99,645	10.1%
Vancouver	650,380	5.2%	274,365	42.2%	41,360	6.4%	11,595	4.4%
Surrey	562,565	10.0%	250,870	44.6%	39,910	7.1%	30,715	14.0%
Burnaby	245,725	6.8%	123,795	50.4%	18,920	7.7%	8,650	7.5%
Richmond	208,400	6.0%	125,600	60.3%	13,705	6.6%	7,295	6.2%
Coquitlam	147,465	6.8%	67,540	45.8%	8,595	5.8%	6,480	10.6%
Abbotsford	150,800	8.8%	43,190	28.6%	6,130	4.1%	4,970	13.0%
New Westminster	78,055	11.7%	29,265	37.5%	5,050	6.5%	4,890	20.1%
Delta	107,270	6.4%	35,560	33.1%	4,325	4.0%	4,320	13.8%
Langley, Township	130,960	13.1%	29,890	22.8%	3,805	2.9%	7,395	32.9%
North Vancouver, City	57,505	10.2%	22,020	38.3%	3,585	6.2%	2,090	10.5%
Kelowna	141,760	14.2%	21,635	15.3%	3,545	2.5%	3,795	21.3%
Saanich	115,505	3.3%	26,040	22.5%	3,405	2.9%	1,285	5.2%
North Vancouver, District	87,385	3.0%	28,195	32.3%	3,340	3.8%	1,690	6.4%
Victoria	87,890	7.6%	17,575	20.0%	3,065	3.5%	1,635	10.3%
Nanaimo	97,020	10.7%	15,620	16.1%	2,260	2.3%	2,500	19.1%
Maple Ridge	89,860	11.0%	20,230	22.5%	2,160	2.4%	4,770	30.9%
Port Coquitlam	60,390	4.3%	20,765	34.4%	2,135	3.5%	2,335	12.7%
West Vancouver	43,385	4.1%	19,815	45.7%	2,080	4.8%	1,200	6.4%
Chilliwack	91,985	11.9%	13,600	14.8%	1,610	1.8%	2,615	23.8%
Prince George	75,160	3.6%	7,710	10.3%	1,440	1.9%	280	3.8%

20 communities in B.C. that received the most immigrants over the last census period (2016 – 2021)



The fastest growing immigrant populations are in the Township of Langley, Maple Ridge, and Delta in the Greater Vancouver region. Outside Greater Vancouver, Kelowna and Chilliwack are popular destinations for immigrants to B.C., with over a 20% increase in their immigrant populations.

# Immigration to the Township of Langley

Recent censuses underline the role of immigration in the Township's rapid population growth.

Year	Langley, Township			Greater Vancouver		
	Total Pop #	Immigrant Pop #	Total Immigrant Pop %	Total Pop #	Immigrant Pop #	Total Immigrant Pop %
2021	130,960	29,890	22.8%	2,607,010	1,089,185	41.8%
2016	117,285	22,495	19.4%	2,463,431	989,540	40.8%
2011	104,177	18,520	18.0%	2,313,328	913,310	40.0%
2006	93,726	15,880	16.9%	2,116,581	831,265	39.6%
2001	86,896	13,340	15.4%	1,986,965	738,555	37.5%

Population and Immigration Trends: (2001 - 2021)

- ▶ With an increase of 13.1% between 2016 and 2021, the Township of Langley was the fastest growing municipality in Greater Vancouver. And, at 32.9%, its immigrant population grew much faster than the population overall.
- ▶ Immigration is a greater driver of population growth in the Township than it is in Greater Vancouver as a whole. Between 2001 and 2021, the immigrant population more than doubled at 124%, compared to a 47% increase for Greater Vancouver.

# Immigrants by Age Group

Census data illustrates the emphasis placed on those of core working age within Canada's immigration system.

- ▶ Between 2016 and 2021, about 70% of the Township of Langley's recent immigrants were between the ages of 15 and 54 upon arrival in Canada, 8% lower than Greater Vancouver's regional level (78%).
- ▶ Compared to the previous census period, there were proportionately fewer arrivals over 55 and more between 25 and 54.
- ▶ The Township receives a larger proportion of new immigrants under 15 than does Greater Vancouver, perhaps a reflection of its attractiveness to young families.
- ▶ The Township's Canadian-born population has a higher proportion of young people between the ages of 0 and 14 (23%) than immigrants (4%) and recent immigrants (19%).

Immigration is playing a significant role in addressing Canada's low birth rate and its aging population.

# Period of Arrival

Roughly half of all immigrants in the Township arrived since 2001.

- ▶ Census 2021 shows that the Township of Langley's recent immigrants made up 13% (3,805) of its immigrant population, slightly lower than Greater Vancouver's regional level of 14%
- ▶ The Township of Langley had a more significant proportion of immigrants who arrived in Canada before 1980 than Greater Vancouver: 21% for the Township vs. 15% for the Region.

	Langley, Township		Greater Vancouver	
	#	%	#	%
<b>Total Immigrants</b>	<b>29,890</b>	<b>100%</b>	<b>1,089,185</b>	<b>100%</b>
2016 to 2021	3,805	13%	154,815	14%
2011 to 2015	3,895	13%	133,920	12%
2001 to 2010	7,185	24%	259,830	24%
1991 to 2000	5,565	19%	255,480	23%
1980 to 1990	3,170	11%	126,865	12%
Before 1980	6,265	21%	158,270	15%

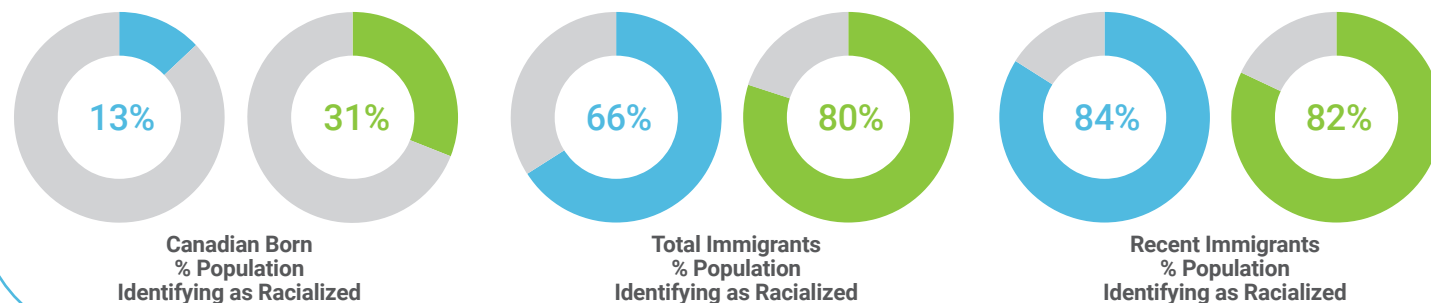
Immigrant Arrivals by Period of Immigration (Census 2021)

Age	Langley, Township						Greater Vancouver					
	Canadian-born		Total Immigrants		Recent Immigrants		Canadian-born		Total Immigrants		Recent Immigrants	
	#	%	#	%	#	%	#	%	#	%	#	%
<b>Total</b>	<b>97,380</b>	<b>100%</b>	<b>29,890</b>	<b>100%</b>	<b>3,805</b>	<b>100%</b>	<b>1,350,620</b>	<b>100%</b>	<b>1,089,180</b>	<b>100%</b>	<b>154,815</b>	<b>100%</b>
0 to 14 yrs	21,925	23%	1,340	4%	730	19%	315,040	23%	35,330	3%	19,650	13%
15 to 24 yrs	12,305	13%	1,880	6%	315	8%	194,025	14%	65,190	6%	14,425	9%
25 to 54 yrs	35,950	37%	14,945	50%	2,365	62%	513,995	38%	536,500	49%	107,135	69%
55 to 64 ys	12,695	13%	4,710	16%	155	4%	153,285	11%	191,990	18%	5,920	4%
65 yrs +	14,500	15%	7,005	23%	240	6%	174,260	13%	260,165	24%	7,690	5%

Age Distribution - Langley, Township (Census 2021)

## Racialized Groups in Langley

Langley, Township Greater Vancouver



- ▶ In both Metro Toronto and Metro Vancouver, racialized groups (also termed visible minorities) are now a majority. In 2021, 54.5% of Metro Vancouver's population identified as racialized.

- ▶ By comparison, in the Township of Langley, 26.6% of residents identified as a member of a racialized group, a proportion close to the national average.

The Township of Langley has a smaller racialized population than Greater Vancouver and is closer to the national average.

## Countries of Origin

India is a prominent source, followed by a diverse assortment of countries.

- ▶ As in B.C. and Greater Vancouver, countries in Asia and Southeast Asia are dominant sources of new immigrants to the Township of Langley.
- ▶ South Korea is a more important source than in B.C. as a whole, accounting for 14% of all immigrants and 16% of recent arrivals. India and the Philippines are less dominant than in Greater Vancouver and B.C. but remain important source countries.
- ▶ The roster of source countries is constantly evolving, as illustrated by the contrast between the Total Immigrant and Recent Immigrant columns.

Langley, Township				B.C.				Greater Vancouver			
	#	%		#	%		#	%		#	%
<b>Total Immigrants</b>	<b>29,890</b>	<b>100%</b>	<b>Recent Immigrants</b>	<b>3,805</b>	<b>100%</b>	<b>Recent Immigrants</b>	<b>197,425</b>	<b>100%</b>	<b>Recent Immigrants</b>	<b>154,820</b>	<b>100%</b>
Korea, South	4,060	14%	China	780	20%	India	39,390	20%	India	30,545	20%
India	3,375	11%	Korea, S.	610	16%	China	31,450	16%	China	28,970	19%
U.K.	3,125	10%	India	530	14%	Philippines	21,220	11%	Philippines	15,090	10%
China	2,920	10%	Philippines	270	7%	U.S.	8,760	4%	Korea, South	6,125	4%
Philippines	1,970	7%	U.S.	180	5%	U.K.	7,670	4%	Iran	5,615	4%
U.S.	1,245	4%	Brazil	145	4%	Korea, South	7,225	4%	U.S.	5,460	4%
Viet Nam	945	3%	U.K.	145	4%	Iran	5,850	3%	Brazil	4,625	3%
Taiwan	810	3%	Viet Nam	85	2%	Brazil	5,125	3%	U.K.	4,555	3%
Germany	790	3%	Syria	70	2%	Syria	4,955	3%	Syria	3,380	2%
Netherlands	660	2%	Mexico	60	2%	Australia	3,280	2%	Mexico	2,460	2%
Other places	9,900	33%	Other places	930	24%	Other places	62,500	30%	Other places	47,995	29%

Top 10 Places of Birth, by Total and Recent Immigrant Populations (Census 2021)

## Immigration Arrival Categories

A large proportion of immigrants arrive in the economic class.

- ▶ Census 2021 shows that 61% of the Township's total immigrant population and 64% of its recent immigrant population arrived under the economic class.
- ▶ In line with Langley's popularity with families, 39% of the Township's recent immigrants were admitted as secondary applicants (immediate family members) under the economic immigration category, considerably higher than the 29% for Greater Vancouver.
- ▶ Refugees are under-represented among Township immigrants. The proportion of recent refugees was just over half that of Greater Vancouver's.

Immigration Category	Langley, Township		Greater Vancouver		Langley, Township		Greater Vancouver	
	Total Immigrants	Recent Immigrants	Total Immigrants	Recent Immigrants	Total Immigrants	Recent Immigrants	Total Immigrants	Recent Immigrants
<b>Total Immigrants</b>	<b>23,620</b>	<b>100%</b>	<b>3,805</b>	<b>100%</b>	<b>930,915</b>	<b>100%</b>	<b>154,820</b>	<b>100%</b>
<b>Economic immigrants</b>	14,305	61%	2,425	64%	554,240	60%	97,715	63%
Principal applicants	5,135	22%	935	25%	225,255	24%	52,940	34%
Secondary applicants	9,165	39%	1,490	39%	328,990	35%	44,775	29%
<b>Immigrants sponsored by family</b>	7,230	31%	1,150	30%	282,705	30%	43,515	28%
<b>Refugees</b>	1,945	8%	180	5%	81,155	9%	12,880	8%
<b>Other immigrants</b>	150	1%	45	1%	12,805	1%	710	0%

Number of Immigrants by Immigration Category (2021). Reflects admission category and applicant type for the immigrant population in private households who landed between 1980 and 2021 - 25% sample data

\*Note: 'Other immigrant' refers to a person who was granted permanent resident status under a public policy or humanitarian and compassionate cases.

China, South Korea and India were the top three source countries for recent immigrants to the Township of Langley.

## Languages Spoken

The proportion of immigrants speaking non-official languages at home is growing.

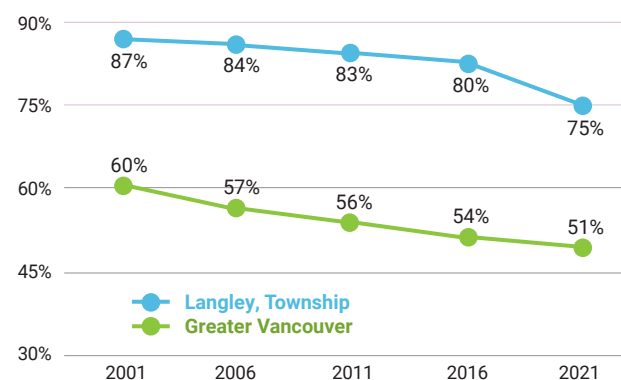
- ▶ In 2021, 62% of the Township of Langley's recent immigrants spoke non-official languages most often at home, slightly higher than Greater Vancouver's regional level of 56%.
- ▶ The proportion of new immigrants in the Township speaking non-official languages at home was higher than in 2016, when the ratio was 57%.
- ▶ There was also a greater proportion of all immigrants speaking non-official languages in 2021 than in 2016—42% compared to 34%.

Langley, Township			Greater Vancouver					
	#	%	#	%	#	%		
<b>Total Immigrants</b>	<b>29,890</b>	<b>100%</b>	<b>Recent Immigrants</b>	<b>3,810</b>	<b>100%</b>	<b>Recent Immigrants</b>	<b>154,820</b>	<b>100%</b>
<b>Non-official languages</b>	12,415	42%	<b>Non-official languages</b>	2,365	62%	<b>Non-official languages</b>	86,615	56%
Korean	3,145	11%	Mandarin	635	17%	Mandarin	21,675	14%
Mandarin	2,460	8%	Korean	510	13%	Punjabi (Panjabi)	13,095	8%
Punjabi (Panjabi)	1,885	6%	Punjabi (Panjabi)	165	4%	Tagalog (Pilipino, Filipino)	6,160	4%
Vietnamese	610	2%	Spanish	140	4%	Korean	4,515	3%
Spanish	570	2%	Tagalog (Pilipino, Filipino)	115	3%	Yue (Cantonese)	4,180	3%
Yue (Cantonese)	425	1%	Portuguese	105	3%	Iranian (Persian)	4,105	3%
Tagalog (Pilipino, Filipino)	425	1%	Urdu	95	2%	Arabic	3,670	2%
Russian	330	1%	Russian	75	2%	Spanish	3,505	2%
Arabic	195	1%	Arabic	70	2%	Portuguese	3,335	2%
Hindi	180	1%	Vietnamese	60	2%	Hindi	2,510	2%
Other non-official languages	2,190	8%	Other non-official languages	395	10%	Other non-official languages	19,865	13%

Top 10 Non-official Languages Spoken at Home (Census 2021)

### Percentage of population with English as a mother tongue

- ▶ English remains more dominant in the Township of Langley than in Greater Vancouver as a whole, but over the past Census period, as immigrant arrivals accelerated, the proportion of those speaking other languages at home grew more rapidly.
- ▶ Since 2001 the proportion speaking English as their mother tongue declined by 12% in the Township and by 9% in Greater Vancouver.



Language Trends (2001-2021) - By % of Population with English Only as a Mother Tongue

## Languages Spoken at Work

The vast majority of immigrants speak English at work, and the proportion is growing.

- ▶ In 2016, 19% of the Township's recent immigrants and 17.8% of Greater Vancouver's recent immigrants spoke non-official languages at work.
- ▶ By 2021, only 12% of the Township of Langley's recent immigrants spoke non-official languages often at work, and the proportion dropped to 10% in Greater Vancouver.

Langley, Township		Greater Vancouver			
Total Immigrants	Recent Immigrants	Recent Immigrants	Recent Immigrants		
	%		%		
<b>Non-official languages</b>	8%	<b>Non-official languages</b>	12%	<b>Non-official languages</b>	10%
Korean	3%	Mandarin	6%	Mandarin	4%
Mandarin	2%	Korean	4%	Punjabi (Panjabi)	2%
Vietnamese	1%	Vietnamese	1%	Yue (Cantonese)	1%

Languages Spoken Most Often at Work By % of immigrant population aged 15 years and over (Census 2021)

## Religious Affiliation

Affiliations in the Township are more concentrated than in Greater Vancouver.

Religion	Langley, Township	G.Van.	
	Total Immigrants	Recent Immigrants	Recent Immigrants
	%	%	%
<b>Total</b>	<b>100%</b>	<b>100%</b>	<b>100%</b>
Buddhist	4%	3%	3%
Christian	47%	40%	30%
Hindu	3%	6%	8%
Jewish	0%	0%	1%
Muslim	4%	7%	10%
Sikh	8%	6%	11%
Traditional (N. American Indigenous) spirituality	0%	0%	0%
Other religions and spiritual traditions	1%	1%	1%
No religion and secular perspectives	33%	38%	38%

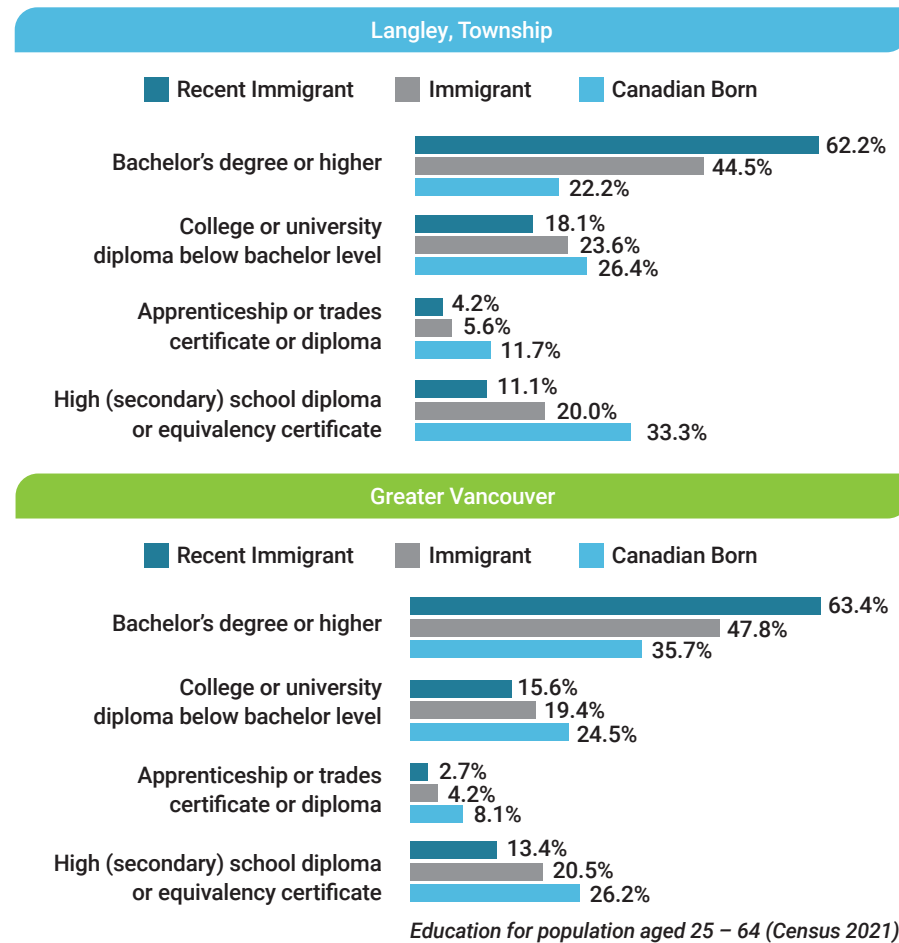
Immigrants and religious affiliation (Census 2021)

- ▶ Immigrants to Canada generally report a higher rate of religious affiliation than non-immigrants. In both the Township and Greater Vancouver about two-thirds of immigrants report an affiliation.
- ▶ In 2021, 40% of recent immigrants identified as Christian, considerable higher than Greater Vancouver (30%).
- ▶ In both the Township and in Greater Vancouver, 38% of recent immigrants reported no religious affiliation.
- ▶ Fewer recent immigrants in the Township identified as Hindu, Muslim and Sikh compared to Greater Vancouver.

## Education Levels

Immigrants are highly educated, with recent immigrants the most educated of all.

- ▶ 62.2% of recent immigrants to the Township of Langley between the ages of 25 and 64 had a bachelor's degree or higher, compared to 22.2% of the Canadian born and 44.5% of all immigrants.
- ▶ Differences in education levels between the Township of Langley and Greater Vancouver were minor for immigrants but significant for the Canadian born; in Greater Vancouver, almost 36% hold a Bachelor's degree or higher compared to 22% in the Township.



## Labour Force Participation

Despite their higher education levels and a high participation rate, immigrants are more likely to be unemployed.

- ▶ Immigrants and new immigrants accounted for 28% of the Township labour force in 2021, up from 22% in 2016.
- ▶ Recent immigrants participated in the labour force at about the same rate as Canadian-born individuals but experienced an unemployment rate of 9% versus 5.8% for the Canadian born. The difference was much less pronounced in Greater Vancouver.
- ▶ Due to factors arising from the COVID 19 pandemic, the unemployment rate of all groups was higher in 2021 than in Census 2016.

	Langley, Township			Greater Vancouver		
	Canadian Born	Total Immigrants	Recent Immigrants	Canadian Born	Total Immigrants	Recent Immigrants
Population aged 15 years and over	75,460	28,550	3,075	1,035,580	1,053,850	135,165
In the labour force	51,545	18,150	2,115	708,255	655,110	101,265
Participation rate (%)	68.3%	63.6%	68.8%	68.4%	62.2%	74.9%
Employment rate (%)	64.3%	58.8%	62.3%	62.8%	56.5%	68.1%
Unemployment rate (%)	5.8%	7.5%	9.0%	8.2%	9.0%	9.1%

Employment / unemployment rates for population aged 15 years and over (Census 2021)

## Occupations

For the most part, recent immigrants, immigrants, and the Canadian-born follow similar paths, but there are some distinctions.

- ▶ Immigrants, and recent immigrants especially, were more likely to work in professional, scientific, and technical services.
- ▶ Accommodation and food services was also an important sector for immigrant employment, even though employment in the category was suppressed by the effects of Covid. In 2016, the sector was the largest employer of recent immigrants in the Township, accounting for 15.3% of jobs, almost double the 2021 proportion.
- ▶ The Canadian-born were over-represented in construction, while recent immigrants were slightly over-represented in manufacturing.
- ▶ It is notable that 4% of the Township's immigrants and new immigrants worked in agriculture, a category otherwise all but unrepresented in Greater Vancouver.

North American Industry Classification System (NAICS)			
Industry	Canadian Born Township	Total Immigrants Township	Recent Immigrants Township
62 Health care and social assistance	10%	12%	9%
44-45 Retail trade	11%	11%	11%
54 Professional, scientific, and technical services	6%	9%	13%
23 Construction	14%	8%	8%
31-33 Manufacturing	7%	8%	10%
72 Accommodation and food services	5%	7%	8%
61 Educational services	8%	7%	6%
48-49 Transportation and warehousing	6%	6%	6%
81 Other services (except public administration)	5%	5%	5%
41 Wholesale trade	5%	4%	5%

Distribution of Top Ten Occupations - By % labour force population aged 15 years and over. Sorted by % immigrant labour force

## Income

The income of immigrants has risen significantly but still lags that of non-immigrants.

### Total Income

- ▶ Census 2021 reported significant income growth for all groups. In 2020, the median income of Township of Langley's recent immigrant population was \$34,000, up 84% from \$18,514 in 2015. The median income for all immigrants and the Canadian born both rose 26% during the period, to \$40,000 and \$48,800.
- ▶ In general, the Township of Langley's labour force earned slightly more than their counterparts in Greater Vancouver, with the exception of recent immigrants.

### Employment Income

- ▶ Census 2021 reported better employment outcomes for recent immigrants. About 33% of the Township of Langley's recent immigrant labour force worked full-time for a full year with employment income in 2020, up from 22.8% in 2015.
- ▶ In 2020, recent immigrants who worked full-time and for an entire year earned \$64,000, up 44% from \$44,399 in 2015.

(continued on page 12)

(continued from page 11: Income)

- ▶ Overall, the gaps between recent immigrants and other groups narrowed sharply between 2016 and 2021, and incomes rose for all groups. Despite this, 15% of recent immigrants fell below Canada's official poverty line versus 9.6% of all immigrants and 5.1% of the Canadian born.

## Glossary of Terms

**Census** refers to the population Census of Canada, which is taken at five-year intervals and counts persons and households and a wide variety of characteristics to provide a statistical portrait of the country.

**Total Population** refers to the total population counts in private households of a specific geographic area, regardless of immigration status on Census Day.

**Canadian-born** refers to a person who was born in Canada. The Canadian-born population also includes a small number of persons born outside Canada who are Canadian citizens by birth.

**Immigrant** refers to a person who is or has ever been a landed immigrant or permanent resident. Such a person has been granted the right to live in Canada permanently by immigration authorities. In the 2021 Census of Population, 'Immigrant' includes immigrants who were admitted to Canada on or before May 1, 2021.

**Recent immigrant** refers to a person who obtained landed immigrant or permanent resident status in the five years preceding a given census. In Census 2021, this refers to the period from January 1, 2016, to May 11, 2021.

**Greater Vancouver** is a regional district (Census Division) often known as **Metro Vancouver**. It is comprised of 21 municipalities, one electoral district and one First Nation (Tsawwassen). It borders the Strait of Georgia to the west, the U.S. border to the south, Abbotsford, and Mission to the east, and unincorporated mountainous areas to the north.

### Notes:

- ▶ Total population data in each chart or table may vary slightly due to different data sources, i.e. 100% data and 25% sample data from Census profiles.
- ▶ Totals in each chart or table may vary slightly due to rounding.

## Low Income

- ▶ Despite the narrowing gaps in media income between recent immigrants and other groups, many recent immigrants live in poverty. 21% of the Township's recent immigrants had a total revenue of less than \$10,000 in 2020, more than double the share of immigrants (10%) and the Canadian-born population (9%).



The Library Link For Newcomers

**NewToBC partners with libraries and community service providers to develop, deliver, and promote services and resources that support immigrant settlement and integration in communities across British Columbia. NewToBC uses innovative approaches and emerging technologies to deliver three key activities.**

1. **NewToBC** operates the **Library Champions Project** in communities across B.C.
2. **NewToBC** develops, updates, and disseminates a variety of library and settlement information resources for new immigrants and B.C.'s community of Service Provider Organizations that are available via the NewToBC website.
3. **NewToBC** uses social media platforms to share information about settlement resources, volunteer opportunities, and no cost workshops, training and community events of interest to new immigrants.

Go to our **Facebook**, **Twitter**, **Instagram** and **LinkedIn** feeds to find out more.

**NewToBC** is managed by **Public Library InterLINK** and is funded through a Contribution Agreement with **Immigration, Refugees and Citizenship Canada (IRCC)**.

**Copyright © 2023: NewToBC:** The Library Link for Newcomers and Public Library InterLINK

*Data source: this profile was developed with Stats Canada Census data for 2021, 2016, 2011 and 2006. This product has not been endorsed by Statistics Canada.*