



# Immigrant Demographics New Westminster, BC

2023

## About the **NewToBC** Immigrant Demographic Profiles

**NewToBC** is pleased to share this 3rd edition of its **Immigrant Demographic Profiles**; the first edition was developed in 2013 and the second in 2018. Using Census 2021 data, profiles have been created for the 14 Greater Vancouver / Fraser Valley communities that received the greatest number of new immigrants over the last census period (2016 – 2021).

The profiles include useful data on countries of origin, languages spoken, age at immigration, education levels,

employment, income, religion, and more. Library staff and community service providers have found these profiles invaluable for service planning and funding proposals. Immigrants, the business community and others have found the information useful in understanding their communities and their newest residents.

To learn more about **NewToBC** and its work and for a glossary of terms, see the back page.

Funded by:

Financé par :



Immigration, Refugees  
and Citizenship Canada

Immigration, Réfugiés  
et Citoyenneté Canada



## About the City of New Westminster

New Westminster, the oldest community in Metro Vancouver and one-time capital of B.C., is situated near the region's geographical centre. It is bordered by Burnaby to the west and north, Coquitlam to the east, and the Fraser River to the south.

The New Westminster Public Library has two locations.

City of  
New Westminster

## Land Acknowledgement

NewToBC acknowledges that New Westminster is located on the unceded and unsundered land of the Halkomelem speaking peoples.

## The National Picture

In 2021, Canada welcomed a record number of immigrants — 406,000. Immigrants made up 23% of Canada's total population, also a new high. Nearly 70,000 chose B.C. in 2021; this marked the second-highest level of international immigration to B.C. on record.

Geography	Total Pop 2021	Immigrant Pop 2021	Immigrant Pop Total 2021	Recent Immigrant Pop 2021	Recent Immigrant Pop Total 2021
	#	#	%	#	%
Canada	36,991,981	8,361,505	23.0%	1,328,240	3.7%
Ontario	14,223,942	4,206,585	30.0%	584,680	4.2%
British Columbia	5,000,879	1,425,710	29.0%	197,425	4.0%
Quebec	8,501,833	1,210,600	14.6%	202,740	2.4%
Alberta	4,262,635	970,970	23.2%	193,175	4.6%
Manitoba	1,342,153	257,620	19.7%	58,370	4.5%
Saskatchewan	1,132,505	137,620	12.5%	43,115	3.9%
Nova Scotia	969,383	71,565	7.5%	21,385	2.2%
New Brunswick	775,610	44,120	5.8%	16,040	2.1%
Newfoundland and Labrador	510,550	14,250	2.8%	4,265	0.9%
Prince Edward Island	154,331	11,765	7.8%	4,860	3.2%
Yukon	40,232	5,385	13.6%	1,125	2.8%
Northwest Territories	41,070	4,145	10.3%	815	2.0%
Nunavut	36,858	1,165	3.2%	240	0.7%

100% sample data for total population and 25% sample data for immigration status (Census 2021)

- ▶ The number of immigrants settling in B.C. almost doubled between 2016 and 2021; 38,085 arrived in 2016 and 69,470 in 2021.
- ▶ In Census 2021 British Columbia's 1.42 million immigrants represented 17% of the national total. Only Ontario, with 4.2 million, had more.
- ▶ 29% of all British Columbians were born outside of Canada, similar to Ontario's 30% and notably higher than the national level of 23%.
- ▶ During the census period, B.C. welcomed 14.9% of Canada's recent immigrants; Ontario welcomed 44%.
- ▶ NOTE: Census 2021 encompasses a portion of the Covid period, when immigration levels were low, and does not capture the strong post-Covid increase.

## Immigration to British Columbia

These were the 20 B.C. municipalities attracting the largest numbers of immigrants during the Census period – 2016 to 2021.

- ▶ In Census 2021, 76.4% of all B.C.'s immigrants and 78.4% of recent immigrants resided in Greater Vancouver.
- ▶ Recent immigrants accounted for more than 80% of total population growth in Greater Vancouver.
- ▶ In 2021, New Westminster was the 7th largest recipient of recent immigrants to B.C.

Geography	Total Pop 2021	Total Pop Growth 2016-2021	Immigrant Pop 2021	Immigrant Total Pop 2021	Recent Immigrant Pop 2021	Recent Immigrant Total 2021	Immigrant Pop Growth 2016-2021	Immigrant Pop Growth 2016-2021
	#	%	#	%	#	%	#	%
British Columbia	4,915,945	7.8%	1,425,715	29.0%	197,425	4.0%	133,040	10.3%
Greater Vancouver	2,607,010	7.5%	1,089,185	41.8%	154,815	5.9%	99,645	10.1%
Vancouver	650,380	5.2%	274,365	42.2%	41,360	6.4%	11,595	4.4%
Surrey	562,565	10.0%	250,870	44.6%	39,910	7.1%	30,715	14.0%
Burnaby	245,725	6.8%	123,795	50.4%	18,920	7.7%	8,650	7.5%
Richmond	208,400	6.0%	125,600	60.3%	13,705	6.6%	7,295	6.2%
Coquitlam	147,465	6.8%	67,540	45.8%	8,595	5.8%	6,480	10.6%
Abbotsford	150,800	8.8%	43,190	28.6%	6,130	4.1%	4,970	13.0%
<b>New Westminster</b>	<b>78,055</b>	<b>11.7%</b>	<b>29,265</b>	<b>37.5%</b>	<b>5,050</b>	<b>6.5%</b>	<b>4,890</b>	<b>20.1%</b>
Delta	107,270	6.4%	35,560	33.1%	4,325	4.0%	4,320	13.8%
Langley, Township	130,960	13.1%	29,890	22.8%	3,805	2.9%	7,395	32.9%
North Vancouver, City	57,505	10.2%	22,020	38.3%	3,585	6.2%	2,090	10.5%
Kelowna	141,760	14.2%	21,635	15.3%	3,545	2.5%	3,795	21.3%
Saanich	115,505	3.3%	26,040	22.5%	3,405	2.9%	1,285	5.2%
North Vancouver, District	87,385	3.0%	28,195	32.3%	3,340	3.8%	1,690	6.4%
Victoria	87,890	7.6%	17,575	20.0%	3,065	3.5%	1,635	10.3%
Nanaimo	97,020	10.7%	15,620	16.1%	2,260	2.3%	2,500	19.1%
Maple Ridge	89,860	11.0%	20,230	22.5%	2,160	2.4%	4,770	30.9%
Port Coquitlam	60,390	4.3%	20,765	34.4%	2,135	3.5%	2,335	12.7%
West Vancouver	43,385	4.1%	19,815	45.7%	2,080	4.8%	1,200	6.4%
Chilliwack	91,985	11.9%	13,600	14.8%	1,610	1.8%	2,615	23.8%
Prince George	75,160	3.6%	7,710	10.3%	1,440	1.9%	280	3.8%

20 communities in B.C. that received the most immigrants over the last census period (2016 – 2021)



New Westminster is home to about 30,000 immigrants, representing 37.5% of the city's population, and accounting for 2.7% of immigrants in Greater Vancouver. Between 2016 and 2021, the city showed rapid growth in both its total (11.7%) and immigrant (20.1%) populations, compared to 7.5% and 10.1% in Greater Vancouver.

# Immigration to the City of New Westminster

Recent censuses underline the role of immigration in the City's population growth.

Year	New Westminster			Greater Vancouver		
	Total Pop #	Immigrant Pop #	Total Immigrant Pop %	Total Pop #	Immigrant Pop #	Total Immigrant Pop %
2021	78,055	29,265	37.5%	2,607,010	1,089,185	41.8%
2016	70,996	24,375	34.9%	2,463,431	989,540	40.8%
2011	65,976	21,735	33.4%	2,313,328	913,310	40.0%
2006	58,549	18,360	31.4%	2,116,581	831,265	39.6%
2001	54,656	15,280	28.0%	1,986,965	738,555	37.5%

Population and Immigration Trends: (2001 - 2021)

- ▶ Immigration has played a pivotal role in driving population growth in New Westminster, accounting for 60% of net population growth over the past two decades.
- ▶ The percentage of immigrants has steadily increased from 28.0% in 2001 to 37.5% in 2021.
- ▶ The immigrant proportion of New Westminster's population is slightly lower than in Greater Vancouver but is growing rapidly and on track to equal it within the next decade or so.

# Immigrants by Age Group

Census data illustrates the emphasis placed on those of core working age within Canada's immigration system.

- ▶ Immigration is a key economic solution to Canada's aging population. In 2021, the average age of recent immigrants in New Westminster was 33.8, compared to 48.2 for all immigrants and 38.3 for the Canadian-born.
- ▶ In 2021, those of core working age (25-54 years) accounted for 78% of recent immigrants and 57% of all immigrants, compared to 42% among the Canadian-born. All of these measures are significantly higher than regional levels.
- ▶ Only 4% of recent immigrants were aged 65 or over, compared to 19% of immigrants and 14% of the Canadian-born.
- ▶ New Westminster's Canadian-born population showed a notably higher proportion of children aged 0-14 (20%), compared to immigrants (3%) and recent immigrants (10%). In part, these are the children of immigrants who started families after arriving in Canada.

**Immigration is playing a significant role in addressing Canada's low birth rate and its aging population.**

# Period of Arrival

Immigrant arrivals have been steady over the past three decades.

- ▶ Census 2021 shows that recent immigrants made up 17% of the immigrant population, higher than Greater Vancouver's regional level of 14%.
- ▶ 29% of New Westminster's immigrants had lived in Canada for less than ten years, versus 26% in Greater Vancouver.

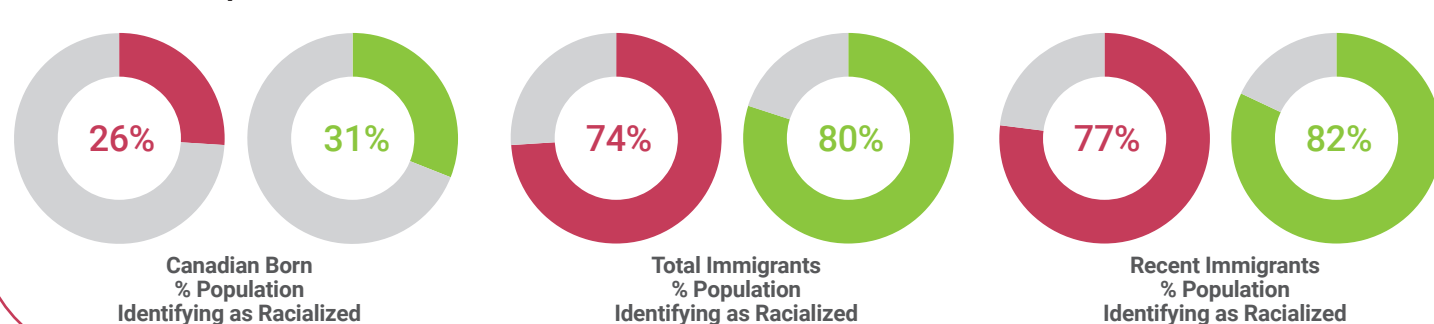
	New Westminster		Greater Vancouver	
	#	%	#	%
<b>Total Immigrants</b>	<b>29,265</b>	<b>100%</b>	<b>1,089,185</b>	<b>100%</b>
2016 to 2021	5,050	17%	154,815	14%
2011 to 2015	3,420	12%	133,920	12%
2001 to 2010	7,300	25%	259,830	24%
1991 to 2000	6,605	23%	255,480	23%
1980 to 1990	2,830	10%	126,865	12%
Before 1980	4,065	14%	158,270	15%

Immigrant Arrivals by Period of Immigration (Census 2021)

Age	New Westminster			Greater Vancouver			
	Canadian-born #	Total Immigrants %	Recent Immigrants %	Canadian-born #	Total Immigrants %	Recent Immigrants %	
<b>Total</b>	<b>43,955</b>	<b>100%</b>	<b>29,265</b>	<b>1,350,620</b>	<b>100%</b>	<b>1,089,180</b>	<b>100%</b>
0 to 14 yrs	8,630	20%	745	315,040	23%	35,330	3%
15 to 24 yrs	4,735	11%	1,545	194,025	14%	65,190	6%
25 to 54 yrs	18,385	42%	16,615	513,995	38%	536,500	49%
55 to 64 yrs	5,865	13%	4,695	153,285	11%	191,990	18%
65 yrs +	6,335	14%	5,660	174,260	13%	260,165	24%

Age Distribution - New Westminster (Census 2021)

## Racialized Groups in New Westminster



- ▶ A significant majority of both New Westminster's immigrants (74%) and recent immigrants (77%) identify themselves as members of a racialized group, also known as visible minorities. Among the Canadian-born, 26% were so identified.

- ▶ These proportions are slightly lower than in the Greater Vancouver region.

**The percentage of the total immigrant population identifying as racialized is slightly lower in New Westminster (74%) than Greater Vancouver (80%).**

## Countries of Origin

Patterns of immigration have been unusually diverse.

▶ India, China and the Philippines are the top three countries of origin for immigrants in New Westminster, as is the case in Greater Vancouver and B.C. However, together they only accounted for 38% of immigrants and 36% of new immigrants, compared to 47% and 49% for recent immigrants in B.C and Greater Vancouver.

▶ New Westminster has also been welcoming to refugees and displaced individuals. Three significant source countries of refugees to B.C.—Eritrea, Ukraine, and Serbia—rank in the top 10 countries of birth for recent immigrants.

▶ New Westminster is unique in Greater Vancouver with Brazil close to the top three as a source country of recent immigrants.

New Westminster			B.C.			Greater Vancouver		
	#	%		#	%		#	%
<b>Total Immigrants</b>	<b>29,265</b>	<b>100%</b>	<b>Recent Immigrants</b>	<b>5,050</b>	<b>100%</b>	<b>Recent Immigrants</b>	<b>197,425</b>	<b>100%</b>
Philippines	5,050	17%	India	805	16%	India	39,390	20%
India	3,130	11%	China	535	11%	China	31,450	16%
China	2,875	10%	Philippines	445	9%	Philippines	21,220	11%
U.K.	1,285	4%	Brazil	385	8%	U.S.	8,760	4%
Hong Kong	1,250	4%	Eritrea	360	7%	U.K.	7,670	4%
Korea, South	1,085	4%	Korea, South	200	4%	Korea, South	7,225	4%
U.S.	785	3%	U.S.	140	3%	Iran	5,850	3%
Taiwan	725	2%	Ukraine	125	2%	Brazil	5,125	3%
Romania	580	2%	Serbia	120	2%	Syria	4,955	3%
Brazil	540	2%	Mexico	115	2%	Australia	3,280	2%
Other places	11,960	41%	Other places	1,820	36%	Other places	62,500	30%

Top 10 Places of Birth, by Total and Recent Immigrant Populations (Census 2021)

## Immigration Arrival Categories

Six out of ten immigrants to New Westminster arrived in the economic class.

▶ Census 2021 reported that approximately 60% of immigrants to New Westminster arrived in the economic class, similar to the level for Greater Vancouver.

▶ One-quarter of immigrants were sponsored by family members, slightly lower than the regional proportion.

▶ At 13% of immigrants and 15% of recent immigrants, the proportion of refugees is significantly higher than in Greater Vancouver.

Immigration Category	New Westminster		Greater Vancouver		New Westminster		Greater Vancouver	
	Total Immigrants	Recent Immigrants	Total Immigrants	Recent Immigrants	Total Immigrants	Recent Immigrants	Total Immigrants	Recent Immigrants
	#	%	#	%	#	%	#	%
<b>Total Immigrants</b>	<b>25,200</b>	<b>100%</b>	<b>5,050</b>	<b>100%</b>	<b>930,915</b>	<b>100%</b>	<b>154,820</b>	<b>100%</b>
<b>Economic immigrants</b>	<b>14,825</b>	<b>59%</b>	<b>2,960</b>	<b>59%</b>	<b>554,240</b>	<b>60%</b>	<b>97,715</b>	<b>63%</b>
Principal applicants	6,485	26%	1,790	35%	225,255	24%	52,940	34%
Secondary applicants	8,335	33%	1,170	23%	328,990	35%	44,775	29%
<b>Immigrants sponsored by family</b>	<b>6,920</b>	<b>27%</b>	<b>1,300</b>	<b>26%</b>	<b>282,705</b>	<b>30%</b>	<b>43,515</b>	<b>28%</b>
<b>Refugees</b>	<b>3,225</b>	<b>13%</b>	<b>760</b>	<b>15%</b>	<b>81,155</b>	<b>9%</b>	<b>12,880</b>	<b>8%</b>
<b>Other immigrants</b>	<b>230</b>	<b>1%</b>	<b>25</b>	<b>0%</b>	<b>12,805</b>	<b>1%</b>	<b>710</b>	<b>0%</b>

Number of Immigrants by Immigration Category (2021). Reflects admission category and applicant type for the immigrant population in private households who landed between 1980 and 2021 - 25% sample data

\*Note: 'Other immigrant' refers to a person who was granted permanent resident status under a public policy or humanitarian and compassionate cases.

India, China, and the Philippines were the top three source countries for recent immigrants to the City of New Westminster.

## Languages Spoken

More than half of recent immigrants speak non-official languages at home.

- ▶ In the 2021 Census, 56% of recent immigrants in New Westminster spoke non-official languages most often at home, equal to the regional level.
- ▶ The percentage of recent immigrants speaking non-official languages at home has remained

- stable since the 2016 Census. In Greater Vancouver the proportion has been declining.
- ▶ Mandarin remains the most frequently spoken home language.
- ▶ Although India is the top country of birth for recent immigrants, only 2%

- of recent immigrants often spoke Punjabi at home, suggesting a high level of English proficiency.
- ▶ Consistent with source country data, 7% of recent immigrants spoke Tigrigna, an Ethio-Semitic language spoken in Eritrea and the Tigray region of northern Ethiopia.

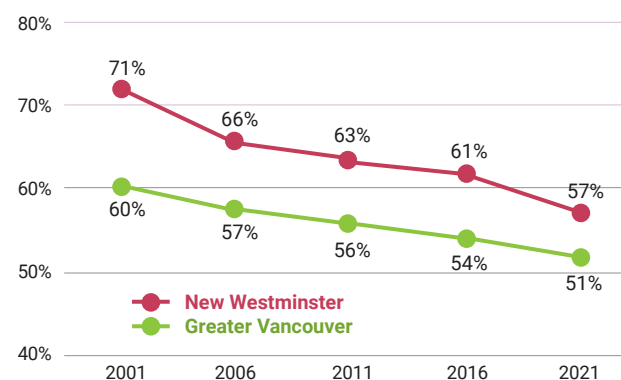
New Westminster			Greater Vancouver		
	#	%	#	%	
<b>Total Immigrants</b>	<b>29,265</b>	<b>100%</b>	<b>Recent Immigrants</b>	<b>5,050</b>	<b>100%</b>
Non-official languages	12,495	43%	Non-official languages	2,810	56%
Mandarin	1,850	6%	Mandarin	385	8%
Tagalog (Pilipino, Filipino)	1,485	5%	Tigrigna	350	7%
Yue (Cantonese)	1,460	5%	Portuguese	295	6%
Punjabi (Panjabi)	1,300	4%	Spanish	175	3%
Korean	770	3%	Korean	155	3%
Spanish	570	2%	Tagalog (Pilipino, Filipino)	145	3%
Russian	490	2%	Serbian	125	2%
Serbo-Croatian	435	1%	Serbo-Croatian	125	2%
Portuguese	430	1%	Russian	115	2%
Tigrigna	420	1%	Punjabi (Panjabi)	110	2%
Other non-official languages	3,285	11%	Other non-official languages	830	16%

Greater Vancouver		
	#	%
<b>Recent Immigrants</b>	<b>154,820</b>	<b>100%</b>
Non-official languages	86,615	56%
Mandarin	21,675	14%
Punjabi (Panjabi)	13,095	8%
Tagalog (Pilipino, Filipino)	6,160	4%
Korean	4,515	3%
Yue (Cantonese)	4,180	3%
Iranian (Persian)	4,105	3%
Arabic	3,670	2%
Spanish	3,505	2%
Portuguese	3,335	2%
Hindi	2,510	2%
Other non-official languages	19,865	13%

Top 10 Non-official Languages Spoken at Home (Census 2021)

### Percentage of population with English as a mother tongue

- ▶ Over time, there has been a significant decline in the percentage of residents who speak English only as their mother tongue. The figure dropped from 71% in 2001 to 57% in 2021, a more dramatic decrease than the Greater Vancouver's decline from 60% to 51%.



Language Trends (2001-2021) - By % of Population with English Only as a Mother Tongue

## Languages Spoken at Work

The vast majority of immigrants speak English at work, and the proportion is growing.

- ▶ In 2021, 5% of recent immigrants in New Westminster spoke non-official languages often at work, compared to 10% in Greater Vancouver.

- ▶ In both cases the numbers are about half of those in the 2016 census.

New Westminster		Greater Vancouver	
Total Immigrants	Recent Immigrants	Recent Immigrants	Recent Immigrants
	%		%
Non-official languages	5%	Non-official languages	5%
Mandarin	2%	Mandarin	1%
Yue (Cantonese)	1%	Yue (Cantonese)	1%
Korean	1%	Korean	0.7%
		Non-official languages	10%
		Mandarin	4%
		Punjabi (Panjabi)	2%
		Yue (Cantonese)	1%

Languages Spoken Most Often at Work By % of immigrant population aged 15 years and over (Census 2021)

## Religious Affiliation

New Westminster has a smaller proportion of secular immigrants.

	New Westminster	G. Van.
Religion	Total Immigrants %	Recent Immigrants %
<b>Total</b>	<b>100%</b>	<b>100%</b>
Buddhist	4%	3%
Christian	48%	44%
Hindu	4%	9%
Jewish	0%	0%
Muslim	6%	8%
Sikh	6%	4%
Traditional (N. American Indigenous) spirituality	0%	0%
Other religions and spiritual traditions	1%	2%
No religion and secular perspectives	31%	30%

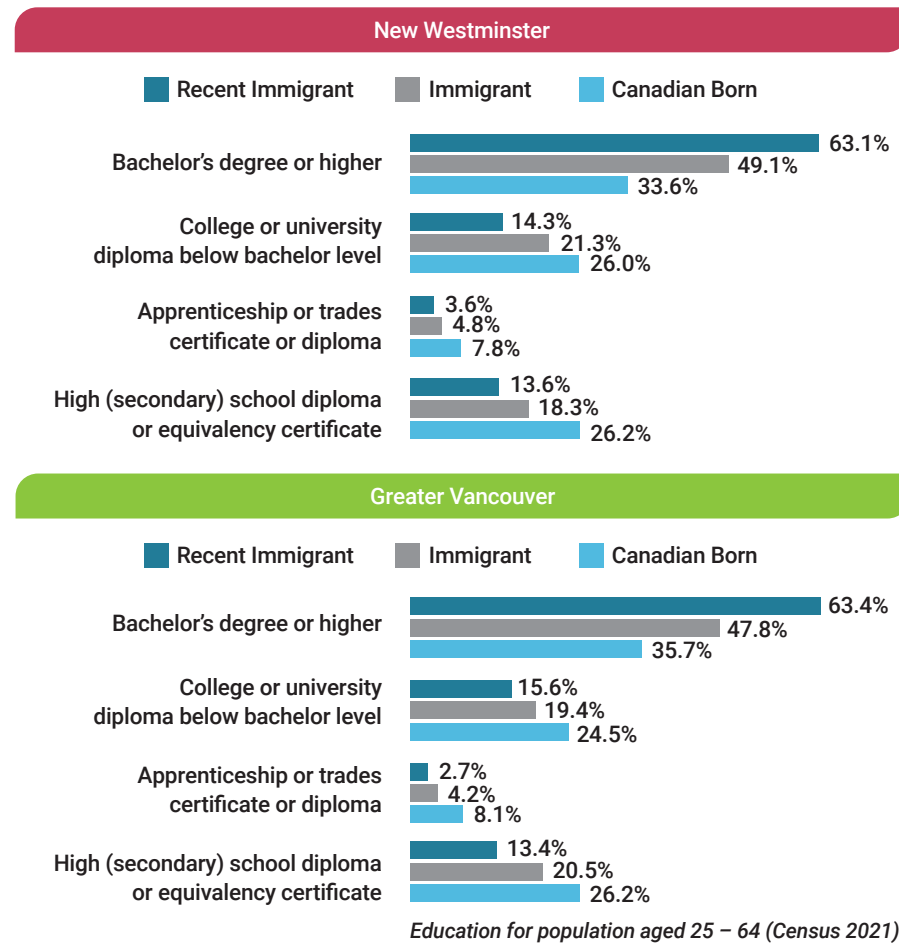
Immigrants and religious affiliation (Census 2021)

- ▶ Only 30% of recent immigrants identify as having no religion or holding secular perspectives, compared to 38% in Greater Vancouver.
- ▶ A notably higher proportion (44%) of recent immigrants in New Westminster identify as Christian compared to Greater Vancouver (30%), but the number is nonetheless lower than the 48% for all immigrants.
- ▶ Only 4% of recent immigrants identify as Sikh, versus 11% in Greater Vancouver, and 6% of all immigrants.
- ▶ In comparison, 9% of recent immigrants are Hindu and 8% Muslim, a proportion in line with Greater Vancouver.

## Education Levels

Immigrants are highly educated, with recent immigrants the most educated of all.

- ▶ Both at the municipal and regional levels, immigrants and recent immigrants reported higher levels of educational attainment at the college or university level, while the Canadian-born reported higher levels in apprenticeship and trades.
- ▶ Recent immigrants between the ages of 25 and 64 were highly educated, with 63.1% holding a bachelor's degree or higher. This compares to 49.1% of all immigrants and 33.6% of the Canadian-born.
- ▶ Compared to the previous census period, education levels rose significantly. In 2016, 52.4% of recent immigrants and 43.3% of immigrants had a bachelor's degree or higher.



## Labour Force Participation

A remarkably high participation rate in 2021 is a notable increase since 2016.

- ▶ Census 2021 reported that immigrants and recent immigrants represented 42% and 7% of the labour force respectively, a notable increase from the corresponding rates of 38% and 5% in 2016.
- ▶ Recent immigrants in both New Westminster and Greater Vancouver show the highest participation rate of all groups, a remarkable 78.3% in New Westminster. This suggests that recent immigration policies have been effective in bringing a labour force to the city and region.

	New Westminster			Greater Vancouver		
	Canadian Born	Total Immigrants	Recent Immigrants	Canadian Born	Total Immigrants	Recent Immigrants
Population aged 15 years and over	35,320	28,520	4,545	1,035,580	1,053,850	135,165
In the labour force	24,635	19,925	3,560	708,255	655,110	101,265
Participation rate (%)	69.7%	69.9%	78.3%	68.4%	62.2%	74.9%
Employment rate (%)	63.9%	64.2%	71.6%	62.8%	56.5%	68.1%
Unemployment rate (%)	8.4%	8.2%	8.7%	8.2%	9.0%	9.1%

Employment / unemployment rates for population aged 15 years and over (Census 2021)

## Occupations

Recent immigrants, immigrants, and the Canadian-born follow similar paths, with only minor distinctions.

- ▶ In 2021, New Westminster's top three largest occupational sectors for recent immigrants, all immigrants, and the Canadian-born were health care and social assistance, professional, scientific and technical services, and retail trade. However, recent immigrants were more prominent in the professional services sector, while long-time immigrants and the Canadian-born had a larger presence in the healthcare sector.
- ▶ Immigrants were also more likely to work in accommodation and food services. However, in the case of recent immigrants, the proportion dropped by almost half from 2016 (from 11% to 6%), largely because the sector was depressed due to the Covid pandemic.

North American Industry Classification System (NAICS)			
Industry	Canadian Born New Westminster	Total Immigrants New Westminster	Recent Immigrants New Westminster
62 Health care and social assistance	12%	14%	8%
54 Professional, scientific and technical services	10%	12%	15%
44-45 Retail trade	11%	9%	10%
23 Construction	9%	7%	7%
31-33 Manufacturing	5%	7%	8%
48-49 Transportation and warehousing	6%	7%	7%
72 Accommodation and food services	4%	7%	6%
61 Educational services	9%	6%	5%
56 Administrative and support, waste management and remediation services	4%	5%	5%
52 Finance and insurance	4%	5%	5%

Distribution of Top Ten Occupations - By % labour force population aged 15 years and over. Sorted by % immigrant labour force

## Income

The income of immigrants has risen significantly, and now approaches that of the Canadian-born.

### Total Income

- ▶ Census 2021 reported a notable increase in income across immigrants, recent immigrants and Canadian-born in New Westminster.
- ▶ The median income of recent immigrants nearly doubled, from \$21,449 in 2015 to \$40,800 in 2020. Also rising significantly was the median income of immigrants and the Canadian born, up more than 30% to \$42,800 and \$48,800 respectively.
- ▶ Immigrants in New Westminster earned approximately 10% more than their counterparts in Greater Vancouver.

### Employment Income

- ▶ Census 2021 reported better employment outcomes for recent immigrants. About 41% of the recent immigrant labour force worked full-time for an entire year with employment income in 2020, up from 27% in 2015.
- ▶ Recent immigrants who worked full-time and for an entire year earned \$60,400, up 38% from \$43,675 in 2015.
- ▶ Full-time recent immigrant workers earned only 3% less than immigrants, but 14% less than the Canadian-born.

(continued on page 12)

(continued from page 11: Income)

## Low Income

- ▶ According to the Census 2021 data, recent immigrants continued to show a higher likelihood of living on a low income. In 2020, 12.6% of the population aged 15 years and over who were recent immigrants fell into the low-income bracket. In comparison, 10.5% of all immigrants and 7.7% of the Canadian-born were in the same bracket.
- ▶ Compared to Greater Vancouver, New Westminster had a lower proportion of recent immigrants and immigrants but a similar proportion of Canadian-born residents in the low-income bracket.

## Glossary of Terms

**Census** refers to the population Census of Canada, which is taken at five-year intervals and counts persons and households and a wide variety of characteristics to provide a statistical portrait of the country.

**Total Population** refers to the total population counts in private households of a specific geographic area, regardless of immigration status on Census Day.

**Canadian-born** refers to a person who was born in Canada. The Canadian-born population also includes a small number of persons born outside Canada who are Canadian citizens by birth.

**Immigrant** refers to a person who is or has ever been a landed immigrant or permanent resident. Such a person has been granted the right to live in Canada permanently by immigration authorities. In the 2021 Census of Population, 'Immigrant' includes immigrants who were admitted to Canada on or before May 1, 2021.

**Recent immigrant** refers to a person who obtained landed immigrant or permanent resident status in the five years preceding a given census. In Census 2021, this refers to the period from January 1, 2016, to May 11, 2021.

**Greater Vancouver** is a regional district (Census Division) often known as **Metro Vancouver**. It is comprised of 21 municipalities, one electoral district and one First Nation (Tsawwassen). It borders the Strait of Georgia to the west, the U.S. border to the south, Abbotsford, and Mission to the east, and unincorporated mountainous areas to the north.

### Notes:

- ▶ Total population data in each chart or table may vary slightly due to different data sources, i.e. 100% data and 25% sample data from Census profiles.
- ▶ Totals in each chart or table may vary slightly due to rounding.



**NewToBC partners with libraries and community service providers to develop, deliver, and promote services and resources that support immigrant settlement and integration in communities across British Columbia. NewToBC uses innovative approaches and emerging technologies to deliver three key activities.**

1. **NewToBC** operates the **Library Champions Project** in communities across B.C.
2. **NewToBC** develops, updates, and disseminates a variety of library and settlement information resources for new immigrants and B.C.'s community of Service Provider Organizations that are available via the NewToBC website.
3. **NewToBC** uses social media platforms to share information about settlement resources, volunteer opportunities, and no cost workshops, training and community events of interest to new immigrants.

Go to our **Facebook, Twitter, Instagram** and **LinkedIn** feeds to find out more.

**NewToBC** is managed by **Public Library InterLINK** and is funded through a Contribution Agreement with **Immigration, Refugees and Citizenship Canada (IRCC)**.

**Copyright © 2023: NewToBC:** The Library Link for Newcomers and Public Library InterLINK

*Data source: this profile was developed with Stats Canada Census data for 2021, 2016, 2011 and 2006. This product has not been endorsed by Statistics Canada.*