



Census 2021

# Immigrant Demographics Summary

**Data and Analysis.** A Comprehensive  
Look at Recent Immigrant Demographics  
across Greater Vancouver

Funded by:

Financé par :



Immigration, Refugees  
and Citizenship Canada

Immigration, Réfugiés  
et Citoyenneté Canada





## About the NewToBC Immigrant Demographics Summary

Your one-stop source for data on immigrants in Greater Vancouver.

NewToBC is pleased to share this summary of immigrant demographics. In 2023, using Census 2021 data, profiles were created for the 14 Greater Vancouver / Fraser Valley communities that received the greatest number of new immigrants over the last census period (2016 – 2021). This was NewToBC's 3rd edition of its **Immigrant Demographic Profiles**; the first edition was developed in 2013 and the second in 2018.

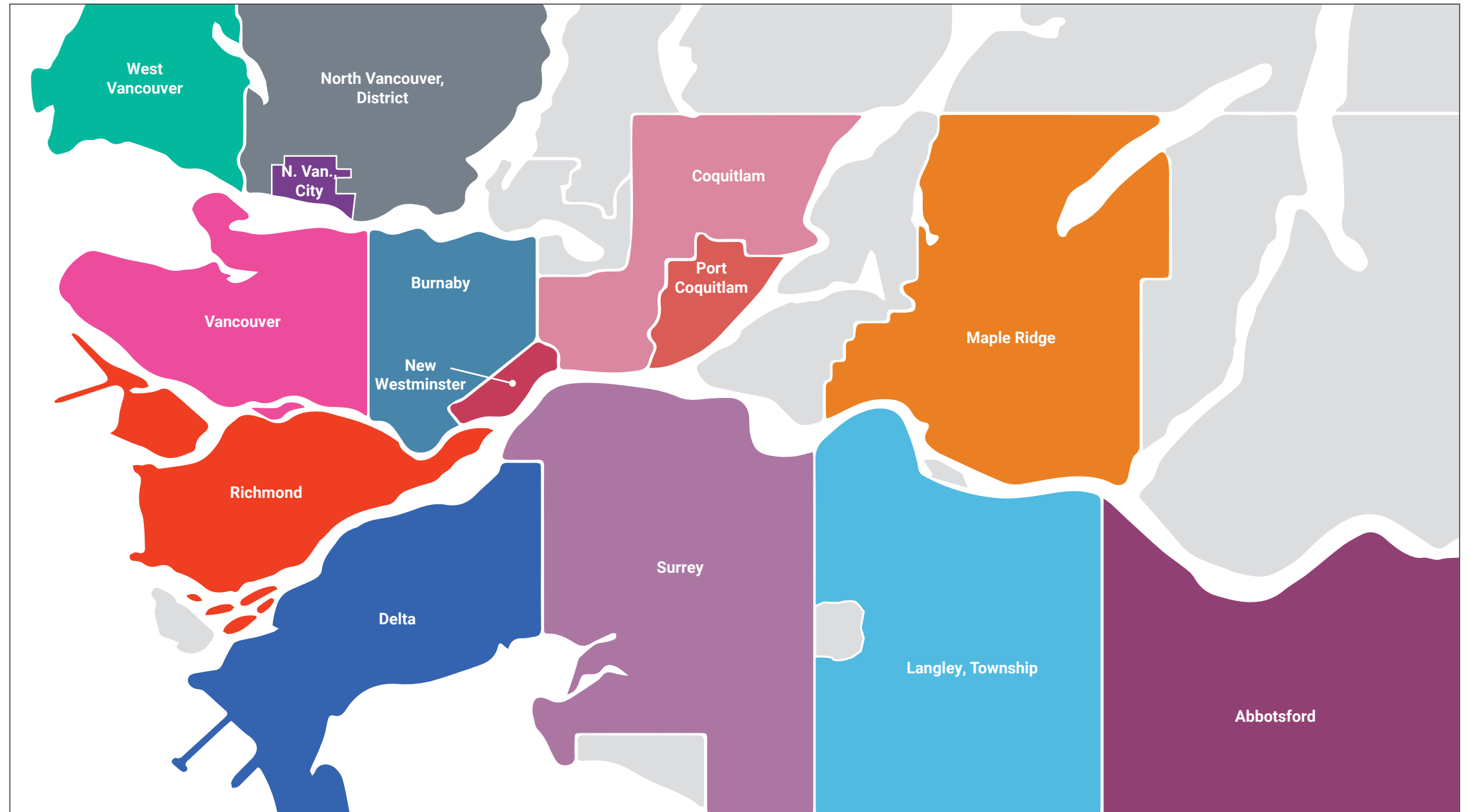
The profiles include useful data on countries of origin, languages spoken, age at immigration, education levels, employment, income, religion, and more. This summary compares all data across communities providing a snapshot of who and where our newest residents are living.

To read the individual community profiles, go to **Immigrant Demographics by Community**. To learn more about NewToBC and its work and for a glossary of terms, see the back page of this summary.

## About Greater Vancouver

There are various ways to define Metro or Greater Vancouver.

For the purposes of this analysis, the most common boundaries have been stretched slightly eastward to include the city of Abbotsford, which is often considered to be functionally part of the metropolitan area. Its inclusion boosts the population considered here to almost 2.8 million (2021). Vancouver is the third largest metro in Canada, after Toronto and Montreal.



### Legend - Map of Greater Vancouver

- |                  |                           |
|------------------|---------------------------|
| Vancouver        | Delta                     |
| Surrey           | Langley, Township         |
| Burnaby          | North Vancouver, City     |
| Richmond         | North Vancouver, District |
| Coquitlam        | Maple Ridge               |
| Abbotsford       | Port Coquitlam            |
| New Westminister | West Vancouver            |

### Land Acknowledgements

NewToBC acknowledges the Greater Vancouver region is located on traditional, ancestral and unceded homelands of the First Nations People of:

- |   |   |  |  |
|---|---|--|--|
| xʷməθkʷəyám (Musqueam), Skwxwú7mesh (Squamish), səliłwətaʔ (Tsleil-Waututh) | Kwikwetlem, Tsleil-Waututh, Katzie, Musqueam, Qayqayt, Squamish, Sto'lo   | ḡicə y (Katzie), ḡʷɑ:nʰən (Kwantlen), Máthkwi (Matsqui), se'mya'me (Semiahmoo), other Coast Salish Nations | Katzie, Kwantlen, Nations represented by the urban indigenous population (Ridge Meadows)                         |
| Semiahmoo, Katzie, Kwikwetlem, Kwantlen, Qayqayt, Musqueam, Tsawwassen      | Stó:lō, Semá:th, Mathxwí  | Skwxwú7mesh (Squamish), Səliłwətaʔ (Tsleil-Waututh)  | kʷikʷəʔəh  |
| hə́hə́mihə́h, Skwxwú7mesh   | scəwəθən (Tsawwassen), xʷməθkʷəyám (Musqueam), other Coast Salish Nations | səliłwətaʔ (Tsleil-Waututh), Skwxwú7mesh Úxwumixw (Squamish), xʷməθkʷəyám (Musqueam)                       | Skwxwú7mesh Úxwumixw (Squamish), səliłwətaʔ (Tsleil-Waututh), xʷməθkʷəyám (Musqueam), other Coast Salish Nations |
| hə́hə́mihə́h  |   |  |  |

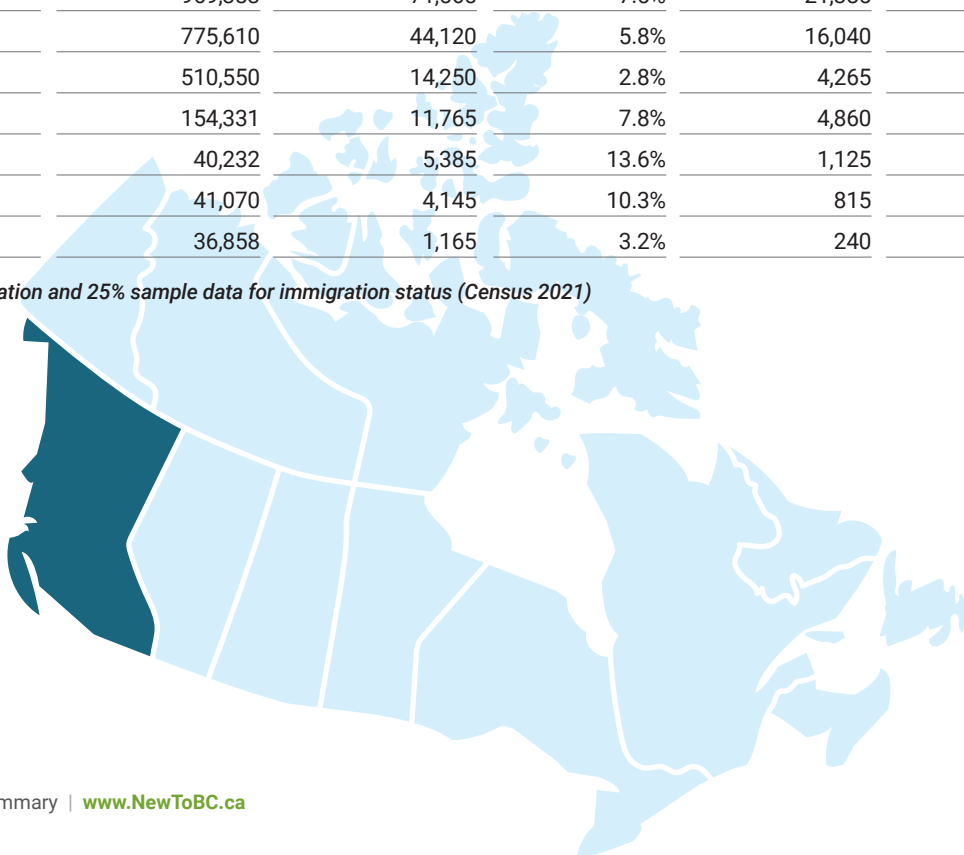
## The National Picture

**In 2021, Canada welcomed a record number of immigrants – 406,000.** Immigrants made up 23% of Canada's total population, also a new high. Nearly 70,000 chose B.C. in 2021; this marked the second-highest level of international immigration to B.C. on record.

- ▶ The number of immigrants settling in B.C. almost doubled between 2016 and 2021; 38,085 arrived in 2016 and 69,470 in 2021.
- ▶ 29% of all British Columbians were born outside of Canada, similar to Ontario's 30% and notably higher than the national level of 23%.
- ▶ NOTE: Census 2021 encompasses a portion of the Covid period, when immigration levels were low, and does not capture the strong post-Covid increase.
- ▶ In Census 2021 British Columbia's 1.42 million immigrants represented 17% of the national total. Only Ontario, with 4.2 million, had more.
- ▶ During the census period, B.C. welcomed 14.9% of Canada's recent immigrants; Ontario welcomed 44%.

Geography	Total Pop 2021 #	Immigrant Pop 2021 #	Immigrant Pop Total 2021 %	Recent Immigrant Pop 2021 #	Recent Immigrant Pop Total 2021 %
<b>Canada</b>	<b>36,991,981</b>	<b>8,361,505</b>	<b>23.0%</b>	<b>1,328,240</b>	<b>3.7%</b>
Ontario	14,223,942	4,206,585	30.0%	584,680	4.2%
<b>British Columbia</b>	<b>5,000,879</b>	<b>1,425,710</b>	<b>29.0%</b>	<b>197,425</b>	<b>4.0%</b>
Quebec	8,501,833	1,210,600	14.6%	202,740	2.4%
Alberta	4,262,635	970,970	23.2%	193,175	4.6%
Manitoba	1,342,153	257,620	19.7%	58,370	4.5%
Saskatchewan	1,132,505	137,620	12.5%	43,115	3.9%
Nova Scotia	969,383	71,565	7.5%	21,385	2.2%
New Brunswick	775,610	44,120	5.8%	16,040	2.1%
Newfoundland and Labrador	510,550	14,250	2.8%	4,265	0.9%
Prince Edward Island	154,331	11,765	7.8%	4,860	3.2%
Yukon	40,232	5,385	13.6%	1,125	2.8%
Northwest Territories	41,070	4,145	10.3%	815	2.0%
Nunavut	36,858	1,165	3.2%	240	0.7%

100% sample data for total population and 25% sample data for immigration status (Census 2021)



## Immigration to British Columbia

**These were the 20 B.C. municipalities that attracted the largest numbers of immigrants during the Census period – 2016 to 2021.** This document is a summary of the 14 communities in which NewToBC's Library Champions Project has been delivered.

- ▶ In Census 2021, 76.4% of all B.C. immigrants and 78.4% of recent immigrants resided in Greater Vancouver.
- ▶ Suburban areas such as Maple Ridge and Langley showed the highest immigrant growth rate.

Geography	Total Pop 2021	Total Pop Growth 2016-2021	Immigrant Pop 2021	Immigrant Total Pop 2021	Recent Immigrant Pop 2021	Recent Immigrant Total 2021	Immigrant Pop Growth 2016-2021	Immigrant Pop Growth 2016-2021
	#	%	#	%	#	%	#	%
British Columbia	4,915,945	7.8%	1,425,715	29.0%	197,425	4.0%	133,040	10.3%
Greater Vancouver	2,607,010	7.5%	1,089,185	41.8%	154,815	5.9%	99,645	10.1%
Vancouver	650,380	5.2%	274,365	42.2%	41,360	6.4%	11,595	4.4%
Surrey	562,565	10.0%	250,870	44.6%	39,910	7.1%	30,715	14.0%
Burnaby	245,725	6.8%	123,795	50.4%	18,920	7.7%	8,650	7.5%
Richmond	208,400	6.0%	125,600	60.3%	13,705	6.6%	7,295	6.2%
Coquitlam	147,465	6.8%	67,540	45.8%	8,595	5.8%	6,480	10.6%
Abbotsford	150,800	8.8%	43,190	28.6%	6,130	4.1%	4,970	13.0%
New Westminster	78,055	11.7%	29,265	37.5%	5,050	6.5%	4,890	20.1%
Delta	107,270	6.4%	35,560	33.1%	4,325	4.0%	4,320	13.8%
Langley, Township	130,960	13.1%	29,890	22.8%	3,805	2.9%	7,395	32.9%
North Vancouver, City	57,505	10.2%	22,020	38.3%	3,585	6.2%	2,090	10.5%
Kelowna	141,760	14.2%	21,635	15.3%	3,545	2.5%	3,795	21.3%
Saanich	115,505	3.3%	26,040	22.5%	3,405	2.9%	1,285	5.2%
North Vancouver, District	87,385	3.0%	28,195	32.3%	3,340	3.8%	1,690	6.4%
Victoria	87,890	7.6%	17,575	20.0%	3,065	3.5%	1,635	10.3%
Nanaimo	97,020	10.7%	15,620	16.1%	2,260	2.3%	2,500	19.1%
Maple Ridge	89,860	11.0%	20,230	22.5%	2,160	2.4%	4,770	30.9%
Port Coquitlam	60,390	4.3%	20,765	34.4%	2,135	3.5%	2,335	12.7%
West Vancouver	43,385	4.1%	19,815	45.7%	2,080	4.8%	1,200	6.4%
Chilliwack	91,985	11.9%	13,600	14.8%	1,610	1.8%	2,615	23.8%
Prince George	75,160	3.6%	7,710	10.3%	1,440	1.9%	280	3.8%

20 communities in B.C. that received the most immigrants over the last census period (2016 – 2021)

## Immigration to Greater Vancouver

Overall, the region displayed relatively steady growth in the proportion of immigrants between 2001 and 2021, though it should be noted that the most recent census period captured a portion of the Covid period and growth has subsequently increased.

Within the region, the recent trend has seen significantly higher growth rates in eastern suburbs compared to more central areas, where the proportion of immigrants was already high but has been growing very slowly or, as in the case of the City of Vancouver, shrinking.

### Population and Immigration Trends (2001 - 2021)

	Greater Vancouver		Vancouver		Surrey		Burnaby		Richmond	
	# Total Immigrants Population	% Pop Born Outside of Canada	# Total Immigrants Population	% Pop Born Outside of Canada	# Total Immigrants Population	% Pop Born Outside of Canada	# Total Immigrants Population	% Pop Born Outside of Canada	# Total Immigrants Population	% Pop Born Outside of Canada
2021	1,089,185	41.8%	274,365	42.2%	250,870	44.6%	123,800	50.4%	125,600	60.3%
2016	989,540	40.8%	262,765	42.5%	220,155	43.0%	115,145	50.1%	118,305	60.2%
2011	913,310	40.0%	258,750	43.8%	187,845	40.5%	111,170	50.5%	112,875	59.6%
2006	831,265	39.6%	260,760	45.1%	150,230	38.0%	102,030	50.3%	99,660	57.1%
2001	738,555	37.5%	247,635	45.4%	114,730	33.0%	90,690	46.8%	88,300	53.7%

	Coquitlam		Abbotsford		New Westminster		Delta		Langley, Township	
	# Total Immigrants Population	% Pop Born Outside of Canada	# Total Immigrants Population	% Pop Born Outside of Canada	# Total Immigrants Population	% Pop Born Outside of Canada	# Total Immigrants Population	% Pop Born Outside of Canada	# Total Immigrants Population	% Pop Born Outside of Canada
2021	67,545	45.8%	43,185	28.6%	29,265	37.5%	35,555	33.1%	29,890	22.8%
2016	61,060	44.2%	38,220	27.6%	24,375	34.9%	31,235	31.0%	22,495	19.4%
2011	52,080	41.7%	33,930	25.9%	21,735	33.4%	28,520	28.9%	18,520	18.0%
2006	44,750	39.1%	31,950	25.7%	18,360	31.4%	27,025	28.0%	15,880	16.9%
2001	41,295	36.6%	27,030	23.4%	15,280	28.0%	25,820	26.6%	13,340	15.4%

	North Vancouver, City		North Vancouver, District		Maple Ridge		Port Coquitlam		West Vancouver	
	# Total Immigrants Population	% Pop Born Outside of Canada	# Total Immigrants Population	% Pop Born Outside of Canada	# Total Immigrants Population	% Pop Born Outside of Canada	# Total Immigrants Population	% Pop Born Outside of Canada	# Total Immigrants Population	% Pop Born Outside of Canada
2021	22,015	38.3%	28,200	32.3%	20,235	22.5%	20,765	34.4%	19,815	45.7%
2016	19,930	38.2%	26,505	31.2%	15,465	19.1%	18,435	31.8%	18,610	44.7%
2011	17,760	37.2%	24,970	29.9%	12,935	17.2%	16,380	29.4%	17,125	40.7%
2006	16,385	36.3%	25,995	31.5%	11,745	17.2%	14,750	28.0%	15,455	36.7%
2001	14,950	33.9%	24,680	30.0%	10,335	16.6%	13,400	26.1%	14,775	35.7%

# Racialized Groups in Greater Vancouver

The term “racialized groups” is an alternative to “people of colour.” This table shows the proportion of each group who describe themselves as such. In areas with historically high immigrant populations such as Richmond, Burnaby and Surrey, the group includes a majority or near majority of Canadian-born residents.

Geography	Canadian Born Population	Total Immigrant Population	Recent Immigrant Population
	%	%	%
Greater Vancouver	31%	80%	82%
Vancouver	33%	78%	66%
Surrey	43%	89%	95%
Burnaby	45%	84%	86%
Richmond	57%	92%	94%
Coquitlam	30%	81%	82%
Abbotsford	21%	79%	91%
New Westminster	26%	74%	77%
Delta	26%	77%	91%
Langley, Township	13%	66%	84%
North Vancouver, City	15%	63%	65%
North Vancouver, District	13%	57%	62%
Maple Ridge	10%	58%	74%
Port Coquitlam	21%	71%	83%
West Vancouver	18%	67%	75%



## Countries of Origin

As has been the case for several census periods, China, India and Philippines prevail as the dominant region-wide source countries by a significant margin. However, within the region, patterns vary significantly from area to area. In the north shore communities of North Vancouver

and West Vancouver, immigrants from Iran are highly prominent. South of the Fraser in areas such as Delta, Surrey and Abbotsford, a majority or near majority are from India. China retains its predominance in Richmond. Source countries are most diverse in communities such as New Westminster and Port Coquitlam.

Top 10 Places of Birth, by Recent Immigrant Populations (Census 2021)

Greater Vancouver			Vancouver			Surrey			Burnaby		
	#	%		#	%		#	%		#	%
Recent Immigrants	154,820	100%	Recent Immigrants	41,360	100%	Recent Immigrants	39,905	100%	Recent Immigrants	18,920	100%
India	30,545	20%	China	5,935	14%	India	18,240	46%	China	4,805	25%
China	28,970	19%	Philippines	4,445	11%	China	4,425	11%	India	2,525	13%
Philippines	15,090	10%	India	3,685	9%	Philippines	4,000	10%	Philippines	1,560	8%
Korea, South	6,125	4%	U.K.	2,410	6%	Syria	1,360	3%	Korea, South	835	4%
Iran	5,615	4%	U.S.	2,295	6%	Korea, South	1,005	3%	Brazil	760	4%
U.S.	5,460	4%	Brazil	1,820	4%	Pakistan	905	2%	Iran	580	3%
Brazil	4,625	3%	Korea, South	1,250	3%	Iraq	760	2%	Eritrea	560	3%
U.K.	4,555	3%	Iran	1,220	3%	U.S.	655	2%	Syria	475	3%
Syria	3,380	2%	Mexico	1,215	3%	Nigeria	475	1%	U.S.	425	2%
Mexico	2,460	2%	Viet Nam	1,000	2%	Viet Nam	455	1%	Afghanistan	400	2%
Other places	47,995	29%	Other places	16,085	39%	Other places	7,625	19%	Other places	5,995	32%

Richmond			Coquitlam			Abbotsford			New Westminster		
	#	%		#	%		#	%		#	%
Recent Immigrants	13,705	100%	Recent Immigrants	8,595	100%	Recent Immigrants	6,130	100%	Recent Immigrants	5,050	100%
China	7,090	52%	China	1,915	22%	India	3,600	59%	India	805	16%
Philippines	1,580	12%	Iran	1,105	13%	Philippines	375	6%	China	535	11%
India	955	7%	Korea, South	1,100	13%	Syria	265	4%	Philippines	445	9%
Hong Kong	820	6%	Philippines	475	6%	Pakistan	145	2%	Brazil	385	8%
Taiwan	365	3%	India	380	4%	Korea, South	125	2%	Eritrea	360	7%
U.S.	275	2%	Brazil	355	4%	U.S.	120	2%	Korea, South	200	4%
Korea, South	215	2%	Russia	245	3%	China	100	2%	U.S.	140	3%
Brazil	195	1%	Syria	210	2%	U.K.	80	1%	Ukraine	125	2%
Syria	125	1%	Hong Kong	180	2%	Congo	65	1%	Serbia	120	2%
Iran	120	1%	Ukraine	175	2%	Russia	60	1%	Mexico	115	2%
Other places	1,965	14%	Other places	2,455	29%	Other places	1,195	19%	Other places	1,820	36%

Delta			Langley, Township			North Vancouver, City			North Vancouver, District		
	#	%		#	%		#	%		#	%
Recent Immigrants	4,325	100%	Recent Immigrants	3,805	100%	Recent Immigrants	3,590	100%	Recent Immigrants	3,340	100%
India	2,025	47%	China	780	20%	Iran	750	21%	Iran	765	23%
China	545	13%	Korea, S.	610	16%	Philippines	555	15%	China	390	12%
Philippines	345	8%	India	530	14%	U.K.	260	7%	U.K.	355	11%
Syria	235	5%	Philippines	270	7%	Brazil	185	5%	Philippines	310	9%
U.S.	135	3%	U.S.	180	5%	India	165	5%	U.S.	275	8%
Pakistan	90	2%	Brazil	145	4%	U.S.	150	4%	India	105	3%
U.K.	80	2%	U.K.	145	4%	China	140	4%	Korea, South	100	3%
Somalia	70	2%	Viet Nam	85	2%	Korea, South	130	4%	Brazil	85	3%
Turkey	65	2%	Syria	70	2%	South Africa	105	3%	South Africa	70	2%
Afghanistan	45	1%	Mexico	60	2%	Mexico	90	3%	France	70	2%
Other places	690	16%	Other places	930	24%	Other places	1,060	30%	Other places	815	24%

Maple Ridge			Port Coquitlam			West Vancouver		
	#	%		#	%		#	%
Recent Immigrants	2,155	100%	Recent Immigrants	2,135	100%	Recent Immigrants	2,080	100%
Philippines	335	16%	China	280	13%	China	815	39%
India	310	14%	Philippines	265	12%	Iran	245	12%
China	175	8%	India	235	11%	U.S.	205	10%
U.S.	145	7%	Korea, South	165	8%	U.K.	105	5%
Iran	130	6%	Iran	140	7%	Philippines	80	4%
U.K.	105	5%	Brazil	90	4%	India	65	3%
Korea, South	95	4%	Afghanistan	65	3%	Russia	50	2%
Brazil	90	4%	Eritrea	45	2%	Korea, South	40	2%
Afghanistan	55	3%	Russia	45	2%	Japan	40	2%
Romania	45	2%	U.S.	45	2%	Ukraine	35	2%
Other places	670	31%	Other places	760	36%	Other places	400	19%



## Immigration Arrival Categories

**Historically, B.C. and Vancouver have drawn a larger proportion of economic class arrivals than the country as a whole.** During the most recent census period, the percentage approached two-thirds, and well over half of those were principal applicants. The number of those sponsored by family were greater in Abbotsford and Richmond, with their well-established immigrant

communities. Refugee arrivals were highest in Delta, Surrey and Burnaby, where they reached double-digit percentages, but refugees accounted for only 8% of arrivals regionwide, roughly half of the national proportion.

### Recent Immigrants by Arrival Categories (Census 2021)

	Greater Vancouver		Vancouver		Surrey		Burnaby	
	#	%	#	%	#	%	#	%
<b>Recent Immigrants</b>								
<b>Total Immigrants</b>	<b>154,820</b>	<b>100%</b>	<b>41,360</b>	<b>100%</b>	<b>39,905</b>	<b>100%</b>	<b>18,920</b>	<b>100%</b>
Economic immigrants	97,715	63%	29,585	72%	23,135	58%	11,545	61%
Principal applicants	52,940	34%	19,005	46%	11,260	28%	6,550	35%
Secondary applicants	44,775	29%	10,575	26%	11,875	30%	4,995	26%
Immigrants sponsored by family	43,515	28%	9,865	24%	12,070	30%	4,930	26%
Refugees	12,880	8%	1,780	4%	4,445	11%	2,380	13%
Other immigrants	710	0%	130	0%	260	1%	65	0%

	Richmond		Coquitlam		Abbotsford		New Westminster	
	#	%	#	%	#	%	#	%
<b>Recent Immigrants</b>								
<b>Total Immigrants</b>	<b>13,705</b>	<b>100%</b>	<b>8,595</b>	<b>100%</b>	<b>6,130</b>	<b>100%</b>	<b>5,050</b>	<b>100%</b>
Economic immigrants	8,055	59%	5,195	60%	2,685	44%	2,960	59%
Principal applicants	4,340	32%	2,415	28%	1,365	22%	1,790	35%
Secondary applicants	3,710	27%	2,775	32%	1,315	21%	1,170	23%
Immigrants sponsored by family	5,080	37%	2,525	29%	2,730	45%	1,300	26%
Refugees	540	4%	865	10%	675	11%	760	15%
Other immigrants	30	0%	20	0%	45	1%	25	0%

	Delta		Langley, Township		North Vancouver, City		North Vancouver, District	
	#	%	#	%	#	%	#	%
<b>Recent Immigrants</b>								
<b>Total Immigrants</b>	<b>4,325</b>	<b>100%</b>	<b>3,805</b>	<b>100%</b>	<b>3,590</b>	<b>100%</b>	<b>3,340</b>	<b>100%</b>
Economic immigrants	2,445	57%	2,425	64%	2,600	72%	2,330	70%
Principal applicants	1,245	29%	935	25%	1,350	38%	930	28%
Secondary applicants	1,200	28%	1,490	39%	1,250	35%	1,400	42%
Immigrants sponsored by family	1,275	29%	1,150	30%	770	21%	895	27%
Refugees	590	14%	180	5%	210	6%	110	3%
Other immigrants	15	0%	45	1%	0	0%	0	0%

	Maple Ridge		Port Coquitlam		West Vancouver	
	#	%	#	%	#	%
<b>Recent Immigrants</b>						
<b>Total Immigrants</b>	<b>2,155</b>	<b>100%</b>	<b>2,135</b>	<b>100%</b>	<b>2,080</b>	<b>100%</b>
Economic immigrants	1,230	57%	1,005	47%	1,505	72%
Principal applicants	480	22%	510	24%	510	25%
Secondary applicants	750	35%	495	23%	995	48%
Immigrants sponsored by family	735	34%	760	36%	550	26%
Refugees	175	8%	340	16%	15	1%
Other immigrants	20	1%	35	2%	0	0%

Number of Immigrants by Immigration Category (2021). Reflects admission category and applicant type for the immigrant population in private households who landed between 1980 and 2021 - 25% sample data

\*Note: 'Other immigrant' refers to a person who was granted permanent resident status under a public policy or humanitarian and compassionate cases.



## Immigrants by Age Group

**More than two-thirds of recent immigrants fell into the 25-54 age group, considered to be of prime working age.** The proportion was highest in the City of Vancouver, at 79%, as well as New Westminster, with 78%, where in both cases economic arrivals were also disproportionately high. Children under 15 accounted for 13% of arrivals and were most prominent south of the

Fraser, a pattern that also held for the 9% of those aged 15-24. The two older age categories are predominantly family sponsorships, and peak at a combined 13%-14% in communities such as Port Coquitlam, Abbotsford, and Delta.

### Recent Immigrant by Age Distribution (Census 2021)

Recent Immigrants	Greater Vancouver		Vancouver		Surrey		Burnaby	
	#	%	#	%	#	%	#	%
<b>Total</b>	<b>154,815</b>	<b>100%</b>	<b>41,360</b>	<b>100%</b>	<b>39,910</b>	<b>100%</b>	<b>18,920</b>	<b>100%</b>
0 to 14 yrs	19,650	13%	3,225	8%	6,275	16%	2,205	12%
15 to 24 yrs	14,425	9%	3,195	8%	4,590	12%	1,625	9%
25 to 54 yrs	107,135	69%	32,485	79%	25,200	63%	13,545	72%
55 to 64 ys	5,920	4%	1,210	3%	1,615	4%	730	4%
65 yrs +	7,690	5%	1,240	3%	2,230	6%	805	4%

Recent Immigrants	Delta		Langley, Township		North Vancouver, City		North Vancouver, District	
	#	%	#	%	#	%	#	%
<b>Total</b>	<b>4,325</b>	<b>100%</b>	<b>3,805</b>	<b>100%</b>	<b>3,585</b>	<b>100%</b>	<b>3,340</b>	<b>100%</b>
0 to 14 yrs	750	17%	730	19%	360	10%	560	17%
15 to 24 yrs	580	13%	315	8%	300	8%	310	9%
25 to 54 yrs	2,500	58%	2,365	62%	2,625	73%	2,090	63%
55 to 64 ys	205	5%	155	4%	150	4%	195	6%
65 yrs +	290	7%	240	6%	155	4%	180	5%

Recent Immigrants	Richmond		Coquitlam		Abbotsford		New Westminster	
	#	%	#	%	#	%	#	%
<b>Total</b>	<b>13,705</b>	<b>100%</b>	<b>8,595</b>	<b>100%</b>	<b>6,125</b>	<b>100%</b>	<b>5,050</b>	<b>100%</b>
0 to 14 yrs	1,770	13%	1,210	14%	805	13%	510	10%
15 to 24 yrs	1,120	8%	765	9%	735	12%	315	6%
25 to 54 yrs	9,205	67%	5,615	65%	3,840	63%	3,925	78%
55 to 64 ys	640	5%	405	5%	400	7%	105	2%
65 yrs +	975	7%	595	7%	355	6%	205	4%

Recent Immigrants	Maple Ridge		Port Coquitlam		West Vancouver	
	#	%	#	%	#	%
<b>Total</b>	<b>2,160</b>	<b>100%</b>	<b>2,135</b>	<b>100%</b>	<b>2,080</b>	<b>100%</b>
0 to 14 yrs	345	19%	295	14%	520	25%
15 to 24 yrs	290	13%	260	12%	170	8%
25 to 54 yrs	1,245	58%	1,285	60%	1,195	57%
55 to 64 ys	125	6%	105	5%	90	4%
65 yrs +	150	7%	195	9%	115	6%

## Languages Spoken

Overall, 56% of recent immigrants speak a non-official language (English or French) at home, led by Mandarin (14%) and Punjabi (8%). Predictably, regional patterns are closely related to

country of origin data. It's worth noting that the census also tracks non-official languages spoken at work, and the proportion in Greater Vancouver has been dropping steadily from census to census, and now resides in single digits.

Top 10 Non-official Languages Spoken by Recent Immigrants at Home (Census 2021)

	Greater Vancouver		Vancouver		Surrey		Burnaby				
	#	%	#	%	#	%	#	%			
Recent Immigrants	154,820	100%	41,360	100%	39,910	100%	18,920	100%			
Non-official languages	86,615	56%	17,150	41%	25,370	64%	11,390	60%			
Mandarin	21,675	14%	3,940	10%	Punjabi	10,520	26%	Mandarin	3,470	18%	
Punjabi	13,095	8%	Tagalog	1,755	4%	Mandarin	3,615	9%	Yue	705	4%
Tagalog	6,160	4%	Spanish	1,290	3%	Tagalog	1,745	4%	Korean	640	3%
Korean	4,515	3%	Yue	1,185	3%	Arabic	1,590	4%	Arabic	575	3%
Yue	4,180	3%	Portuguese	1,130	3%	Hindi	1,300	3%	Portuguese	565	3%
Iranian	4,105	3%	Iranian Persian	790	2%	Korean	810	2%	Tagalog	555	3%
Arabic	3,670	2%	Korean	685	2%	Spanish	560	1%	Spanish	490	3%
Spanish	3,505	2%	Russian	675	2%	Urdu	450	1%	Tigrigna	445	2%
Portuguese	3,335	2%	Vietnamese	610	1%	Yue	350	1%	Iranian Persian	420	2%
Hindi	2,510	2%	Punjabi	405	1%	Gujarati	320	1%	Russian	390	2%
Other non-official lang.	19,865	13%	Other non-official lang.	4,685	11%	Other non-official lang.	4,110	10%	Other non-official lang.	3,135	17%

	Richmond		Coquitlam		Abbotsford		New Westminster				
	#	%	#	%	#	%	#	%			
Recent Immigrants	13,705	100%	8,595	100%	6,125	100%	5,050	100%			
Non-official languages	9,440	69%	5,495	64%	4,130	67%	2,810	56%			
Mandarin	5,510	40%	Mandarin	1,415	16%	Punjabi	2,650	43%	Mandarin	385	8%
Yue	1,245	9%	Korean	865	10%	Arabic	345	6%	Tigrigna	350	7%
Tagalog	710	5%	Iranian Persian	825	10%	Hindi	155	3%	Portuguese	295	6%
Arabic	200	1%	Russian	370	4%	Korean	105	2%	Spanish	175	3%
Punjabi	175	1%	Portuguese	315	4%	Tagalog	95	2%	Korean	155	3%
Portuguese	170	1%	Yue	260	3%	Russian	75	1%	Tagalog	145	3%
Spanish	150	1%	Arabic	260	3%	Urdu	70	1%	Serbian	125	2%
Korean	130	1%	Spanish	205	2%	Gujarati	65	1%	Serbo-Croatian	125	2%
Hindi	115	1%	Tagalog	130	2%	Mandarin	60	1%	Russian	115	2%
Russian	100	1%	Hindi	90	1%	Spanish	55	1%	Punjabi	110	2%
Other non-official lang.	935	7%	Other non-official lang.	760	9%	Other non-official lang.	455	7%	Other non-official lang.	830	16%

	Delta		Langley, Township		North Vancouver, City		North Vancouver, District				
	#	%	#	%	#	%	#	%			
Recent Immigrants	4,325	100%	3,810	100%	3,590	100%	3,340	100%			
Non-official languages	2,535	59%	2,365	62%	1,745	49%	1,610	48%			
Punjabi	1,180	27%	Mandarin	635	17%	Iranian Persian	600	17%	Iranian Persian	575	17%
Mandarin	450	10%	Korean	510	13%	Tagalog	280	8%	Mandarin	250	7%
Arabic	160	4%	Punjabi	165	4%	Portuguese	150	4%	Tagalog	140	4%
Hindi	115	3%	Spanish	140	4%	Korean	125	3%	Spanish	80	2%
Tagalog	110	3%	Tagalog	115	3%	Mandarin	115	3%	Korean	60	2%
Somali	105	2%	Portuguese	105	3%	Spanish	85	2%	Portuguese	60	2%
Turkish	60	1%	Urdu	95	2%	Russian	40	1%	Russian	50	1%
Spanish	60	1%	Russian	75	2%	Ilocano	35	1%	Ilocano	40	1%
Yue	55	1%	Arabic	70	2%	Afrikaans	30	1%	Persian Farsi	35	1%
Urdu	35	1%	Vietnamese	60	2%	Czech	30	1%	Yue	35	1%
Other non-official lang.	205	5%	Other non-official lang.	395	10%	Other non-official lang.	255	7%	Other non-official lang.	285	9%

	Maple Ridge		Port Coquitlam		West Vancouver			
	#	%	#	%	#	%		
Recent Immigrants	2,160	100%	2,135	100%	2,080	100%		
Non-official languages	1,050	49%	1,270	59%	1,220	59%		
Tagalog	145	7%	Mandarin	185	9%	Mandarin	640	31%
Mandarin	135	6%	Tagalog	145	7%	Iranian Persian	215	10%
Arabic	95	4%	Korean	135	6%	Russian	85	4%
Iranian Persian	90	4%	Russian	85	4%	Spanish	50	2%
Korean	75	3%	Iranian Persian	85	4%	Korean	30	1%
Punjabi	60	3%	Arabic	85	4%	Hindi	30	1%
Portuguese	55	3%	Yue	75	4%	Yue Cantonese	25	1%
Dari	50	2%	Punjabi	75	4%	Portuguese	20	1%
Russian	40	2%	Dari	65	3%	Japanese	15	1%
Serbo-Croatian	40	2%	Portuguese	60	3%	Tagalog	10	0%
Other non-official lang.	265	12%	Other non-official lang.	275	13%	Other non-official lang.	100	5%

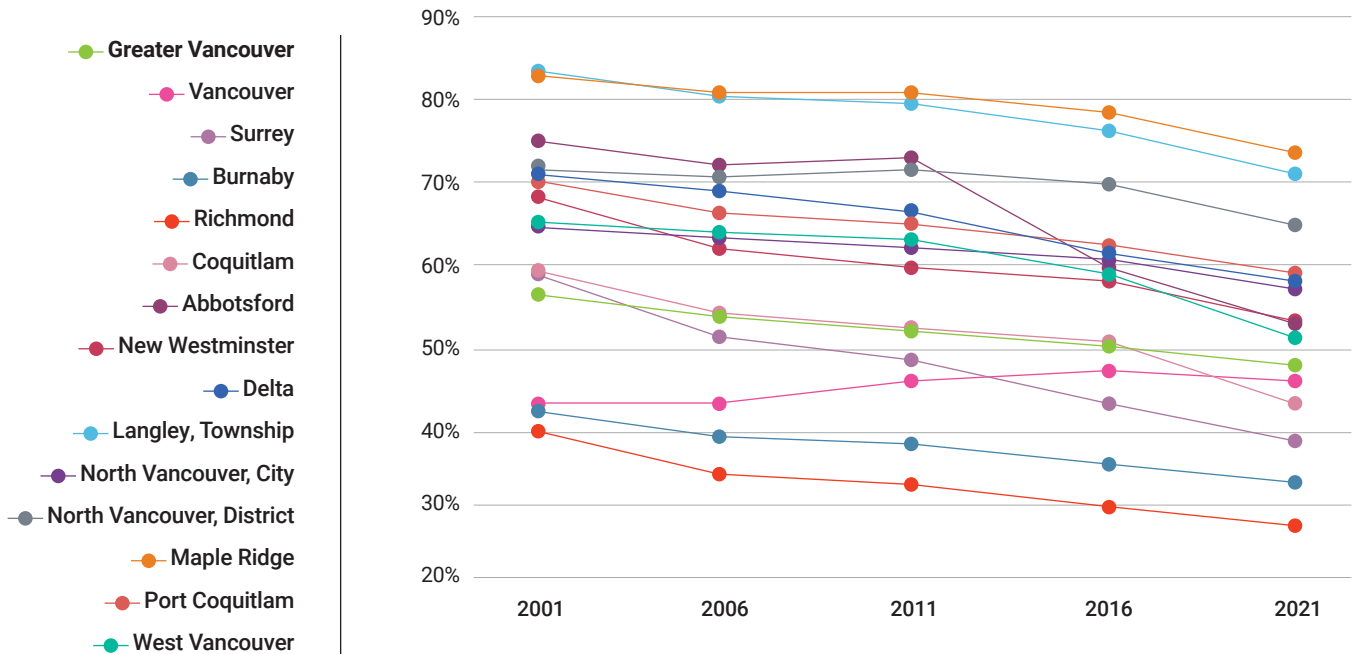
\*Note: Languages noted include the following variations: Punjabi (Panjabi), Tagalog (Pilipino, Filipino), Yue (Cantonese), Persian Farsi (n.o.s.)

# Population with English as a Mother Tongue

The unilingual English-only population in Greater Vancouver currently sits at 51% and will almost certainly slip below half in the 2026 census. At 78%, the proportion remains highest in Maple Ridge, while Richmond's 31% is the lowest. Somewhat oddly, the proportion in the City of Vancouver has been trending slowly upwards, from 48% in 2001, when it was the lowest in the region, to 50% in 2021.

Language Trends (2001-2021) - By % of Population with English Only as a Mother Tongue

	Greater Van.	Vancouver	Surrey	Burnaby	Richmond	Coquitlam	Abbotsford	New West.	Delta	Langley, Town.	North Van., City	North Van., District	Maple Ridge	Port Coquitlam	West Vancouver
	%	%	%	%	%	%	%	%	%	%	%	%	%	%	%
2001	60%	48%	62%	47%	44%	62%	79%	71%	74%	87%	69%	75%	87%	74%	69%
2006	57%	48%	55%	43%	39%	58%	76%	66%	72%	84%	67%	74%	85%	70%	67%
2011	56%	50%	52%	42%	37%	56%	77%	63%	70%	83%	66%	75%	85%	69%	66%
2016	54%	51%	48%	40%	33%	54%	64%	61%	66%	80%	64%	72%	83%	66%	64%
2021	51%	50%	43%	38%	31%	48%	61%	57%	61%	75%	61%	69%	78%	63%	56%



## Religious Affiliation

**In general, immigrants, and especially recent immigrants, are more likely to report a religious affiliation than Canadian born.** Even so, from census to census, the proportion has been dropping. In 2021, Christian retained its predominant position among those with an affiliation, with Sikh, Muslim and Hindu also significant.

### Recent Immigrants and Religious Affiliation (Census 2021)

Recent Immigrants	Greater Van.	Vancouver	Surrey	Burnaby	Richmond	Coquitlam	Abbotsford	New West.	Delta	Langley, Town.	North Van., City	North Van. District	Maple Ridge	Port Coquitlam	West Vancouver
<b>Total</b>	<b>100%</b>	<b>100%</b>	<b>100%</b>	<b>100%</b>	<b>100%</b>	<b>100%</b>	<b>100%</b>	<b>100%</b>	<b>100%</b>	<b>100%</b>	<b>100%</b>	<b>100%</b>	<b>100%</b>	<b>100%</b>	<b>100%</b>
Buddhist	3%	3%	2%	3%	4%	2%	1%	3%	1%	3%	1%	1%	2%	2%	3%
Christian	30%	31%	25%	32%	23%	34%	23%	44%	19%	40%	36%	34%	43%	42%	25%
Hindu	8%	6%	13%	9%	4%	3%	9%	9%	13%	6%	3%	1%	9%	5%	2%
Jewish	1%	1%	0%	0%	1%	0%	0%	0%	1%	0%	1%	1%	0%	0%	0%
Muslim	10%	7%	11%	11%	6%	12%	8%	8%	15%	7%	13%	18%	12%	14%	12%
Sikh	11%	2%	32%	2%	2%	1%	49%	4%	32%	6%	1%	0%	4%	5%	0%
Traditional (N.Amer. Indigenous) spirituality	0%	0%	0%	0%	0%	0%	0%	0%	0%	0%	0%	0%	0%	0%	0%
Other religions and spiritual traditions	1%	1%	0%	1%	1%	2%	0%	2%	1%	1%	1%	1%	0%	0%	0%
No religion and secular perspectives	38%	49%	16%	41%	60%	45%	9%	30%	18%	38%	44%	44%	30%	31%	56%



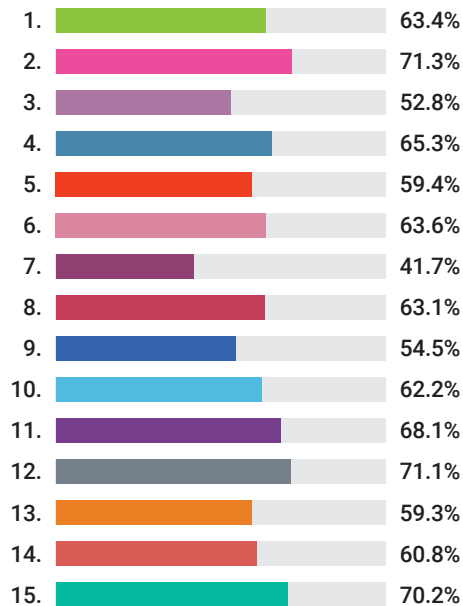
# Education Levels

The proportion of immigrants aged 25-64 with a university degree has grown rapidly and significantly exceeds levels for the Canadian-born. Regionwide, 63.4% possess a degree, and in the City of Vancouver, as well as north shore communities, the proportion approaches or exceeds 70%.

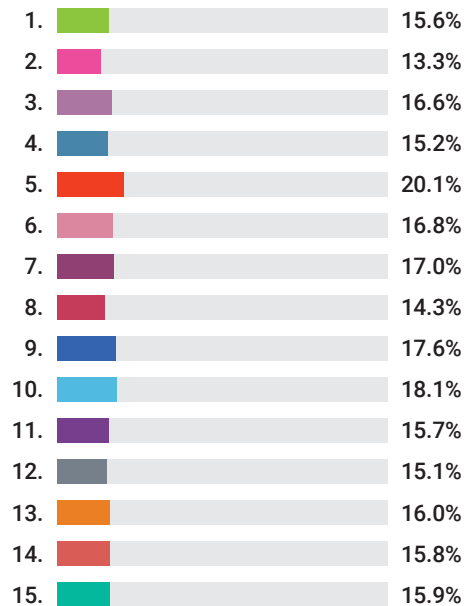
## Education for Recent Immigrant Population Aged 25 – 64 (Census 2021)

- 1. Greater Vancouver
- 2. Vancouver
- 3. Surrey
- 4. Burnaby
- 5. Richmond
- 6. Coquitlam
- 7. Abbotsford
- 8. New Westminster
- 9. Delta
- 10. Langley, Township
- 11. North Van., City
- 12. North Van., District
- 13. Maple Ridge
- 14. Port Coquitlam
- 15. West Vancouver

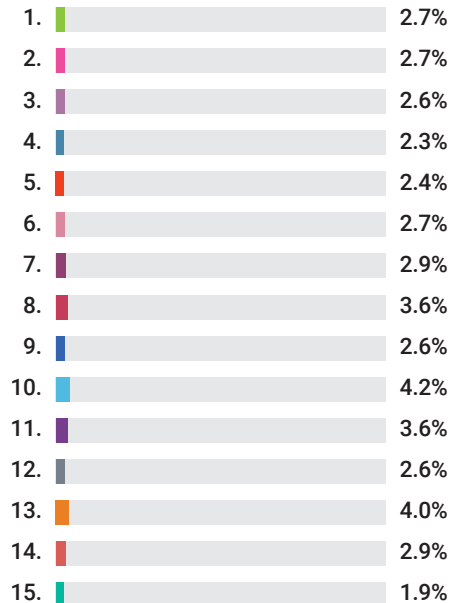
### Bachelor's degree or higher



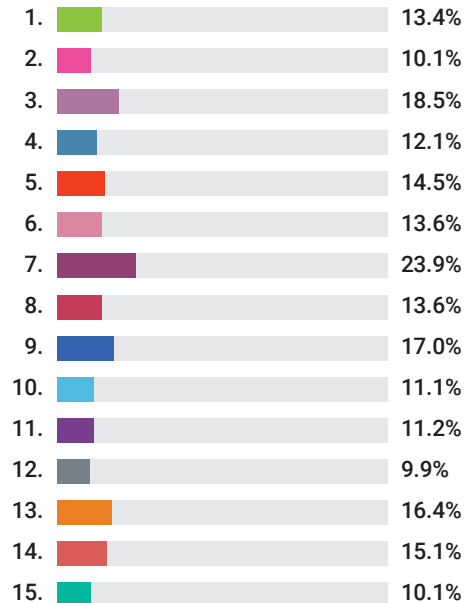
### College or university diploma below bachelor level



### Apprenticeship or trades certificate or diploma



### High (secondary) school diploma or equivalency certificate



## Labour Force Participation

**Labour force data for recent immigrants improved significantly from prior censuses.** Unemployment rates were temporarily elevated due to Covid, but even so recent immigrants fared well compared to both immigrants and the Canadian-born. They also exhibited a much higher participation rate than either, approaching or exceeding 80% in the City of Vancouver, as well as on the north shore.

### Employment / Unemployment Rates for Recent Immigrant Population aged 15 Years and Over (Census 2021)

	Greater Van.	Vancouver	Surrey	Burnaby	Richmond	Coquitlam	Abbotsford	New West.
<b>Recent Immigrants</b>	# / %	# / %	# / %	# / %	# / %	# / %	# / %	# / %
Population aged 15 years and over	135,165	38,135	33,630	16,715	11,940	7,385	5,325	4,545
In the labour force	101,265	30,890	24,760	12,640	8,170	5,045	3,985	3,560
Participation rate (%)	74.9%	81.0%	73.6%	75.6%	68.4%	68.3%	74.8%	78.3%
Employment rate (%)	68.1%	74.6%	66.7%	68.0%	60.1%	61.2%	64.9%	71.6%
Unemployment rate (%)	9.1%	7.9%	9.3%	10.1%	12.1%	10.4%	13.4%	8.7%

	Delta	Langley, Town.	North Van., City	North Van., District	Maple Ridge	Port Coquitlam	West Vancouver
<b>Recent Immigrants</b>	# / %	# / %	# / %	# / %	# / %	# / %	# / %
Population aged 15 years and over	3,570	3,075	3,225	2,775	1,815	1,835	1,560
In the labour force	2,545	2,115	2,560	2,025	1,245	1,315	910
Participation rate (%)	71.3%	68.8%	79.4%	73.0%	68.6%	71.7%	58.3%
Employment rate (%)	64.3%	62.3%	73.2%	67.4%	63.6%	65.9%	50.0%
Unemployment rate (%)	9.8%	9.0%	7.6%	7.4%	7.6%	8.0%	14.3%

# Glossary of Terms

**Census** refers to the population Census of Canada, which is taken at five-year intervals and counts persons and households and a wide variety of characteristics to provide a statistical portrait of the country.

**Total Population** refers to the total population counts in private households of a specific geographic area, regardless of immigration status on Census Day.

**Recent immigrant** refers to a person who obtained landed immigrant or permanent resident status in the five years preceding a given census. In Census 2021, this refers to the period from January 1, 2016, to May 11, 2021.

**Immigrant** refers to a person who is or has ever been a landed immigrant or permanent resident. Such a person has been granted the right to live in Canada permanently by immigration authorities. In the 2021 Census of Population, 'Immigrant' includes immigrants who were admitted to Canada on or before May 1, 2021.

**Greater Vancouver** is a regional district (Census Division) often known as **Metro Vancouver**. It is comprised of 21 municipalities, one electoral district and one First Nation (Tsawwassen). It borders the Strait of Georgia to the west, the U.S. border to the south, Abbotsford, and Mission to the east, and unincorporated mountainous areas to the north.

## Notes:

- ▶ Total population data in each chart or table may vary slightly due to different data sources, i.e. 100% data and 25% sample data from Census profiles.
- ▶ Totals in each chart or table may vary slightly due to rounding.



**NewToBC partners with libraries and community service providers to develop, deliver, and promote services and resources that support immigrant settlement and integration in communities across British Columbia. NewToBC uses innovative approaches and emerging technologies to deliver three key activities.**

1. **NewToBC** operates the **Library Champions Project** in communities across B.C.
2. **NewToBC** develops, updates, and disseminates a variety of library and settlement information resources for new immigrants and B.C.'s community of Service Provider Organizations that are available via the NewToBC website.

3. **NewToBC** uses social media platforms to share information about settlement resources, volunteer opportunities, and no cost workshops, training and community events of interest to new immigrants.

Go to our **Facebook**, **Twitter**, **Instagram** and **LinkedIn** feeds to find out more.

**NewToBC** is managed by **Public Library InterLINK** and is funded through a Contribution Agreement with **Immigration, Refugees and Citizenship Canada (IRCC)**.

**Copyright © 2023: NewToBC:** The Library Link for Newcomers and Public Library InterLINK

---

*Data source: this profile was developed with Stats Canada Census data for 2021, 2016, 2011 and 2006. This product has not been endorsed by Statistics Canada.*